

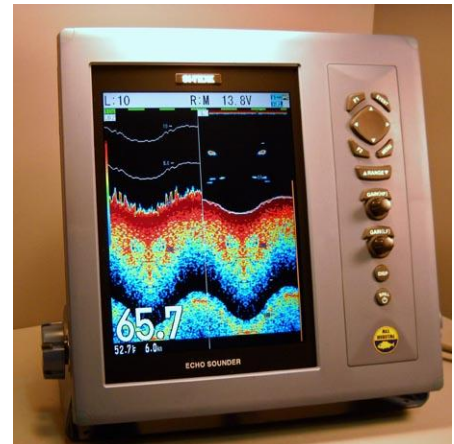
Contact: *Ron Ballanti*  
*Strike Zone Communications*  
*818.349.4608*

## **SI-TEX INTRODUCES CVS-1410 DIGITAL COLOR SOUNDER FOR SERIOUS RECREATIONAL AND COMMERCIAL FISHING APPLICATIONS**

Features Powerful 1 kW Output, with 10.4-inch LCD Display, Digital Signal Processing and Digital Filtering

SI-TEX Marine Electronics has introduced the new CVS-1410, a professional-grade color LCD echo sounder with advanced Digital Signal Processing and Digital Filtering for superior bottom-reading performance and clearer target images in all depths.

SI-TEX's digital design provides both professional and serious recreational fishermen with a range of important advantages, including depth range scales from 10 to 6,000 feet, superior clutter suppression and signal-to-noise ratio, and a faster transmission rate for enhanced shallow-water performance. Its digital design helps the CVS-1410 detect fish close to the bottom in depths never before possible when using a high-frequency transducer. In fact, the 1kW dual-frequency (50/200kHz) CVS-1410 performs as well as or better than many 2kW and 3kW sounders, making it an affordable professional-grade alternative for any vessel.



Bottom detail and fish targets are presented on the CVS-1410's 10.4-inch color TFT LCD display with 640X480 pixel (VGA) resolution. SI-TEX offers the CVS-1410 with several different Transducer choices, allowing the boater to choose the ideal option for his preferred target fish, fishing methods and geographic region.

Whichever version you choose, the CVS-1410 provides a range of useful and unique features designed to enhance fishing success. These include SI-TEX's Detection Area Display, which indicates with numbers and graphic 'beam angle' illustrations the bottom area covered at high and low frequencies. This information is important for boaters to determine the location of fish on the display in relation to the vessel. SI-TEX's exclusive Sona-Tone™ feature provides further help identifying what's under the boat with differing audible alerts for fish and schools of fish.

## **New CVS-1410 Sounder/Page Two**

The CVS-1410 also offers an Image storage feature that holds up to 10 “Snap-Shot” screen display images in its built-in memory for later recall with the touch of button. To help skippers return quickly to fishing hot spots or other previously saved positions, the CVS-1410 offers an easy-to-understand back track navigation display (with optional GPS input) right on the sounder screen. Two programmable Function keys can be customized for quick and easy access to any menu item without having to open up the menu.

While the new CVS-1410 is packed with advanced features, it also offers an Auto Function mode that makes it easy for anyone — even the novice user — to achieve “Hands Free” professional results.

The SI-TEX CVS-1410 Digital Echo Sounder carries an MSRP of \$2,799.00 and is now available through authorized SI-TEX dealers nationwide. For more information about the new CVS-1410 or the full line of advanced SI-TEX marine electronics, contact: SI-TEX Marine Electronics, 25 Enterprise Zone Drive, Suite #2 Riverhead, NY 11901. Telephone: (631) 996-2690. Website: [www.si-tex.com](http://www.si-tex.com)

**E-mail: [customerservice@si-tex.com](mailto:customerservice@si-tex.com)**