

# Fishfinders



**CVS-126**  
5.7" Color LCD Echo Sounder  
600W • 50/200kHz  
The Clear Choice

Digital signal processing • Sona-Tone • Automatic Functions • Fishing Hot Spots • Store the Image • Easy Operation • Sunlight Viewable • Brilliant 5.7" color LCD display with 8, 16, or 64 color levels and an anti-reflective coating for excellent readability in direct sunlight • Auto fishing & Cruising modes • IPX5 waterproof rating • Sleek, compact case design with built-in flush mounting • Audio and visual alarms • Available with various optional transom & thru-hull transducers.



**CVS-128**  
8.4" Color LCD Echo Sounder  
1000W or 600W • 50/200kHz

Superior digital filtering capabilities • Daylight viewable with 8, 16 or 64 color levels & anti-reflective coating • Sona-Tone • Auto Functions • 1000 or 600 Watts of power with 8 ranges from 10-3600' • Stores up to 10 screen images • Fishing Hot Spots function • Auto fishing & Cruising modes • Audio & Visual alarms • Real-time, multi-color A-scope • RGB output for connecting to external VGA monitor • Sleek, waterproof (IPX5 rating) case design with built-in overhead and flush mounting



# Radars

**T-900 SERIES**  
Digital Dual Range Radars  
8.4" True-Color Daylight Viewable LCD Display

Hyper-Digital Processing™ (HDP) • Dual Range Radar • Brilliant 8.4" color LCD daylight viewable display with 480 x 640 pixel resolution and anti-reflective glare coating for outstanding viewing. • True-color radar feature displays echoes in different color depending on signal strength. • True Trail function clearly identifies moving targets from stationary targets. The display shows exact movement of other vessels like drawing tails, while land and buoys are shown as stationary objects even



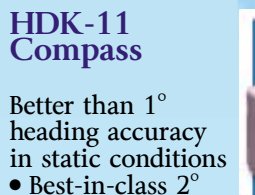
while your vessel is moving. • Easy operation with dedicated control knobs for Gain and STC. • RGB output for connecting external monitor. • Accepts CCD camera input. • Warning Zone alerts • Optional ATA (Automatic Tracking Aid) • Displays up to 100 AIS (Automatic Identification System) targets with optional AIS interface. • Housed in a sleek, compact waterproof (IPX5 rating) case • Built-in flush mounting system

# GPS/WAAS



**GPX-11**

Smart SDGPS Sensor Antenna based on a 16 Ch. GPS • Delivers better than 3 meter accuracy • Low profile housing, Pole or Flush mountable • IP67 • Works with any Si-Tex Chartplotter • Outputs NMEA-0183 GGA, RMC, GSA, GSV, TXT • Inputs Voltage 10vdc to 35vdc @0.8W • Works with any Si-Tex unit and any unit requiring NMEA-0183 input of GPS



Better than 1° heading accuracy in static conditions • Best-in-class 2" heading accuracy in rough seas conditions • Solid State Compass provides Heading Data • Three-axis accelerometer/gyro provides pitch & roll data, and Rate of Turn data • Only recreational heading sensor that uses a three-axis rate gyro • Compass calibration can be easily done on any display or PC • Easily mounts on any angled bulkhead • IPX6 waterproof enclosure • Default 10Hz update rate for heading (HDG) • Outputs NMEA 0183 and NMEA 2000 data simultaneously

# Autopilots

Fixed-Mount & Handheld Autopilots for Ultimate Expandability

The SP-80 and SP-70 bring effortless piloting to vessels with multiple steering stations • Waterproof control heads • Bold Backlit displays with 10 brightness levels • Built-in LORAN/GPS interface • Automatic Sea State and trim controls • 10 selectable levels of rudder sensitivity • Ghost rudder back-up • They are designed for outboard, inboard and sterndrive boats with hydraulic steering systems • Optional analog Rudder Angle Indicator for precise readout of rudder positions



# Multi-function Charting Systems

designed for **MAX** CHARTPLOT

Select a SI-TEX Charting Systems from 5" to 15". Daylight Viewable Color LCD Displays with optional Fishfinder, Radar and AIS so you can build the Charting System to fit your needs.

**Standard Charting System features:** Ultra-fast processor • Compatible with the C-Map MAX charts. • Multi-function GPS Charting/Fishfinder/Radar unit with optional sensors. You can even add AIS receivers. • Units with GPS receiver come standard with GPK-11 antenna. • Interfaces with optional DSC VHF radio for buddy track capability. • Guardian™ Programmable Anti-Grounding feature • Depth Graph feature accepts input from onboard sounder or optional Active Transducer • Split-screen displays. • North-up or Track-up modes. • Port and Services Info, Find Function and Tide Info. • Backlit softkeys and easy-to-use on-screen menu system • GOTO and MOB functions. • Selectable languages. • Coordinates displayed in Lat/Lon, and Loran TD's. • Data can be downloaded onto optional C-Map data card. • NMEA-0183 dataports for interfacing data with other on-board electronics. • Displays wind data when connected to NMEA-0183 wind instrument interface. • Weatherproof construction.



**ColorMax 15**  
15" Daylight Viewable Display!

Second-station repeater capability with video output • Two video ports allow you to connect existing/optionally available cameras • Stores up to 5000 waypoints/marks, 50 routes and 10,000 track points • Bracket mount, surface mount kit and protective cover included



**ColorMax Wide**  
7" Panoramic 16:9 Daylight Viewable Display!

Stores up to 500 waypoints/marks, 25 routes and 1000 track points • Quick-release snap mount, surface mount kit and protective cover included



**ColorMax 6**  
6" Daylight Viewable Display!

Stores up to 500 waypoints/marks, 25 routes and 1000 track points • Quick-release snap mount, surface mount kit and protective cover included



**EC5 5" QVGA Color LCD**

Available with built-in 600W • Dual-frequency fishfinder (plotter/fishfinder combo unit) or optional external black box fishfinder • Quick-disconnect/flush mount



**ColorMax Pro**  
10.4" Daylight Viewable Display

Full alphanumeric keypad • Two video ports allow you to connect existing/optionally available cameras • Second-station repeater capability with video output • Stores up to 1000 waypoints/marks, 50 routes and 5000 track points • Bracket mount, surface mount kit and protective cover included



**Trawl Plot 12 SD**  
12.1" SVGA Daylight Viewable Display!

Designed for the professional • One-Touch event mark for easy storage and retrieval of gear marks • Stores up to 5000 waypoints/marks, 50 routes and 50,000 track points in 5 track memories • Unlimited storage of track/route data on secure digital memory cards



**EC7 7" HD WVGA Color LCD**

Available with built-in 600W Dual-frequency fishfinder (plotter/fishfinder combo unit) or optional external black box fishfinder • Video Input • Quick-disconnect/flush mount

# WeatherFax/Communication



**NAV-FAX 200**  
Your Global Connection at Sea, at Home or Anywhere around the World

Includes a data interface port, cable and Mscan Meteo Lite V3.02 Weather Fax Software on CD. • Tune to international, commercial and amateur frequencies, including the BBC, Radio Moscow and China Radio International. • Monitor ham radio. • Crystal controlled, fully synthesized receiver circuitry with 1 microvolt sensitivity. • Large flywheel-balanced knob with four-level variable tuning rate allows quick and easy tuning and band selection. • Large front-panel LCD displays frequency and signal strength. • Ten instant memories for fast storage and recall of most-used frequencies. Also selects programmed channel for power up. • Three inch, voice optimized, top-mounted speaker, driven by two watts of audio output. • Minimum system requirements: W95/98/ME/2000/XP/Pentium 100, 24MB, mouse and sound card. • Package includes audio cable for connection to PC • Long-wire antenna included

# AIS Receivers



Assists in Traffic Monitoring, Management and Collision Prevention!

The new SI-TEX AIS Radar receives VHF transmissions from vessels carrying automatic identification system transponders. • Receives class A and B AIS transmissions • The AIS Radar displays target data from up to 30 vessels on 5" monochrome LCD matrix, radar like display • Select any vessel on the screen to display vessel's MMSI number, name, course over ground, speed over ground, range, Lat/Lon • Each vessels status is independently labeled so the user can see if a vessel is underway, at anchor, fishing etc. • 6 selectable audible alarm to give warning if a vessel enters a preset range ring • Easy to install, requires optional standard marine VHF antenna and GPS input

# GPS



Differential GPS/Track Plotter with Full Keypad Entry - At An Entry-Level Price.

The GPS-90D has the most wanted features like built-in differential beacon receiver, graphic navigation pages, track plotter and large display. • Full keypad allows quick waypoint entry, no tedious scrolling • Repeatable accuracy to ten feet • Large, easy-to-read backlit Lat/Lon or Loran LOP display • Graphic and digital compass displays • "Electronic Fairway" displays boat on rhumbline course, cross-track error plus progress to desired waypoint • 400 nameable waypoints and event-memory storage • Automatic Lat/Lon to LOP Conversion to transfer favorite Loran fishing hotspots • MOB mode • NMEA 0183 data port • Rugged, weatherproof construction • Also available without differential capability as the GPS-90 and with "H" Field DGPS antenna as GPS-90DH

## Choose the Expandable Charting System Options...

Expand your navigation capabilities. These options connect to the SI-TEX ColorMax Series, Trawl Plot 12D, and Explorer Plus Charting Systems

**MDS Radar Sensor Series**



Adds Full-Featured Radar Capabilities

Choose from various models. MDS-1 - 2kW, 24NM, 12.4" Radome; MDS-8-2kW, 24NM, 20" Radome; MDS-9 - 4kW, 36NM, 23.5" Radome; and MDS-10 - 4kW, 48NM, 4' or 5' Open Array • Selectable range scales from 1/8NM • Displays complete overview of vessel traffic, weather and fixed target data • Other features include radar overlay on charts\*\*, color shades of target intensity, split-screen displays, FTC, STC, adjustable VRM and EBL \*\*Heading sensor is required for chart overlay

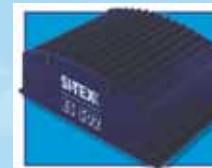
**AIS Black Box Receiver**



Assists In Traffic Monitoring, Management and Collision Prevention

Receives VHF transmissions from vessels carrying automatic identification system transponders. • Connects to these Charting Systems (and many other manufacturer's Charting Systems that support AIS input) to display target data from an unlimited number of vessels and overlay AIS target data on marine charts • Receives class A and B AIS transmissions • Included SeaClear Charting software gives you capability of displaying AIS vessel data on your PC marine charts plus the receiver also works with many PC software applications that have AIS capabilities • Easy to install, requires optional standard marine VHF antenna

**ES502 Fishfinder Module**

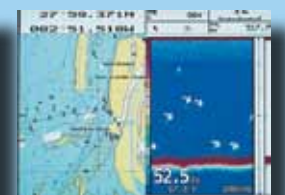


Adds Full-Featured Fishfinder Capabilities

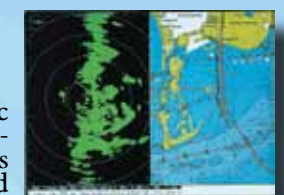
Dual-Frequency 50/200 kHz operation • 500/1000 watts of power • Real-time, multicolor A-Scope • Full-screen or split-screen presentations • Other features include zoom; interference rejection and noise filter; shallow, deep, fish and temperature alarms • Transducers sold separately



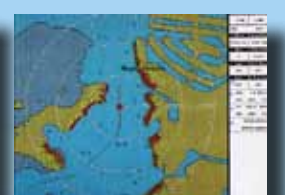
Fishfinder Display



Chart/Fishfinder Display



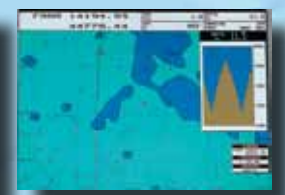
Radar/Chart Display



Radar Overlay Display



Chart with AIS Information



Loran Information Displayed

# Specifications

	CVS-126	CVS-128	ES502		GPS-95CP
<b>Display</b>	5.7" TFT Color LCD (240 x 320 pixels)	8.4" TFT Color LCD (640 x 480 pixels)	N/A	<b>Power Requirements</b>	12-36 VDC, 3W
<b>Display Colors</b>	8, 16, 64 or monochrome	8, 16, 64 or monochrome	Up to 16	<b>Color LCD display</b>	4.3" (diagonal)
<b>Power Requirements</b>	10.8-31.2 V DC	10.8-31.2 V DC	10-35V DC	<b>Resolution</b>	480 x 272 pixels
<b>Power Consumption</b>	10W or less at 12V DC	25W or less at 12V DC	17w or less at 12V DC	<b>Cartography</b>	Uses C-Map MAX or NT+ C-Card cartridges
<b>Operating Frequency</b>	Dual Frequency 50/200 kHz	Dual Frequency 50/200 kHz	Dual Frequency 50/200 kHz	<b>Cursor Control</b>	Trackpad
<b>Output Power</b>	600W	600W/1000W	500/1000W RMS	<b>Memory</b>	Non-volatile
<b>Depth Ranges*</b>	8 ranges selectable from 0 to 2800'	8 ranges from 10 to 3600'	2.5' to 1500'	<b>Waypoints/Marks</b>	2000
<b>Zoom Ranges</b>	10 - 650 feet (23 steps)	10 - 650 feet (23 steps)	2x, 4x	<b>Routes</b>	100 (20 wpts per rt.)
<b>Audible Alarm</b>	Fish, bottom, depth, temperature, speed**, arrival**, XTE**	Fish, bottom, depth, temperature, speed**, arrival**, XTE**	Fish, depth, shallow and temperature alarm (upper/lower)	<b>Track Plots</b>	50,000
<b>Image Speed</b>	9 levels plus stop (2/1, 1/1, Stop, 1/1.5, 1/2, 1/2.5, 1/3, 1/3.5, 1/4, 1/4.5)	9 levels plus stop (2/1, 1/1, Stop, 1/1.5, 1/2, 1/2.5, 1/3, 1/3.5, 1/4, 1/4.5)	Fast, medium, slow	<b>Type of User Points</b>	16, alphanumeric
<b>Auto Functions</b>	Depth range, Shift and Gain	Depth range, Shift and Gain		<b>Plotting Intervals</b>	Distance - 0.03 to 10 NM Time- 3 sec to 60 mins
<b>Input Format</b>	NMEA0183 (GGA, GLL, ZDA, VTG, RMC, MTW, VHW, MWV, HDT)	NMEA0183 (GGA, GLL, ZDA, VTG, RMC, MTW, VHW, MWV, HDT)	NMEA-0183	<b>Operating Temperature</b>	5° to 122°F (-15° to 50° C)
<b>Output Format</b>	NMEA0183 (DBT, DPT, GGA, GLL, MTW, RMC, TLL, VHW, VTG, ZDA, HDT, MWV)	NMEA0183 (DBT, DPT, GGA, GLL, MTW, RMC, TLL, VHW, VTG, ZDA, HDT, MWV)	NMEA-0183	<b>Input/Output Format</b>	NMEA-0183
<b>Other Functions</b>	Interference rejection, Color rejection, Depth marker (VRM), Event memory, Panel illumination, Draft adjustment, Temperature correct, Boat speed correct, White Line, Sona-Tone™, Display memory, Waypoint navigation, Power reduction, Built-in simulator, Image shift, Multiple languages, IPX5 waterproof rating	Interference rejection, Color rejection, Depth marker (VRM), Event memory, Panel illumination, Draft adjustment, Temperature correct, Boat speed correct, White line, Sona-Tone™, Power reduction, Built-in simulator, Noise rejection, Simple plotter, Image shift, Multiple languages, IPX5 waterproof rating	Interference rejection	<b>Antenna</b>	External or Internal
<b>Case Size/Weight</b>	7.2"W x 7.2"H x 4.1"D, 2.9 lbs.	9.5"W x 9.5"H x 4.5"D, 7.2 lbs.	2.2"H x 7.6"W x 6.9"D, 2.2 lbs	<b>Case Size/Weight</b>	6.9"W x 3.9"H x 3.2"D, 1.1 lbs

GPS/WAAS RECEIVER	
<b>Receiver</b>	L1, C/A/code
<b>Accuracy</b> <i>(subject to change in accordance with DOD civil GPS user policy)</i>	Better than 3m, 95% of the time
<b>Max. Solution Update Rate</b>	1 per sec
<b>Cable Length</b>	33 feet

AIS RADAR/AIS BLACK BOX	
Power Requirements: 50mA @ 10-16VDC / 43mA@10-16 VDC; Frequency: 161.976 and 162.02 MHz; Zoom: 6 selectable ranges from 1, 2, 4, 8, 16 and 32 NM; Case Size/Weight: 6"W x 4.5"H x 1.6"D, 1.3 lbs/ 4.7"W x 1.5"H x 3.9"D, .05 lbs.; Other Features: Receives NMEA input (RMC) from the vessels GPS to put the user at the center of the screen. All other AIS carrying vessels are displayed with bearing and range relative to the user.	

	NAV-FAX 200				
	T-900 Series	MDS-1	MDS-8	MDS-9	MDS-10
<b>Display</b>	8.4 TFT Color LCD (640 x 480 pixels)				N/A
<b>Display Modes</b>	Head up, North up**, Course up ***, True motion ***		Head-up, North-up, Course-up		
<b>Range Scales NM</b>	1/8 to 24/36/48	1/8 to 24	1/2 to 24	1/8 to 356	1/8 to 48
<b>Range Rings NM</b>	1/32-12	1/32 to 6	1/32 to 6	1/32 to 9	1/32 to 12
<b>Input Format</b>	NMEA-0183			N/A	
<b>Power Requirement</b>	10.2-41.6v DC	10.8-31.2V DC	10.8-41.6v DC	10.8-41.6v DC	10.8-41.6v DC
<b>Power Consumption</b>	45W // 55W //70W	30W or less	30W or less	45W or less	80W or less
<b>Case Size/Weight</b>	8.7"H x 8.7"W x 3.9"D, 7.7 lbs				N/A
<b>ANTENNA UNIT</b>					
<b>Scanner</b>	18" Radome // 25" Radome 3.5" or 4.5" Open ARray	12.4" Radome	20" Radome	23.5" Radome	4' or 5' Open Array
<b>Peak Power Output</b>	2kW // 4kW // 4kW	2kW	2kW	4kW	4kW
<b>Frequency</b>	9410 +/- 30 MHz// 9445 +/- 30MHz	9410 +/- 30 MHz	9410 +/- 30 MHz	9445 +/- 30MHz	9445 +/- 30MHz
<b>Beam Width Horizontal</b>	6° //3.9° // 2.5° (3.5'), 1.8° (4.5')	7°	4.7°	4°	2.4° (4') 1.7° (4.5')
<b>Vertical</b>	25° // 25° // 22°	25°	25°	25°	25°

SP-70/SP-80	
<b>Operating Volatage</b>	10-40V DC
<b>Power Consumption</b>	Avg. 3 amps
<b>Solenoid Output</b>	20 amps max.
<b>DC Reversing Pump</b>	+/- 20 amps max
<b>Clutch Output</b>	3 amps max
<b>Navigational Interace</b>	NMEA 0183
<b>Heading Reference</b>	Fluxgate
<b>Course Resolution</b>	1°
<b>Course Detection</b>	0.25°
<b>Pumpset</b>	18 cubic inc, 12V DC standard
<b>Case Size/Weight</b>	SP 70: 2.8"W x 1"D x 5.2"H, Approx 1.1lb SP-80: 6"W x 1"D x 3.1"H, Approx. 2 lbs.
<b>Processor Unit</b>	6.3"@ x 15"1 x 2.7"H
<b>Fluxgate Compass</b>	5.6"W x 4.2"L x3.4"H

	EC5	EC7	EC11	ColorMax 6	ColorMax Wide	ColorMax Pro	ColorMax 15	Trawl Plot 12SD	Explorer Plus
<b>Power Requirements</b>	10-35V DC, 5.2W	10-35V DC, 9.2W	10-35V DC, 12.5W	10-35 VDC, 8W	10-35 VDC, 8W	10-35 VDC, 12.5W	10-35 VDC, 30W	10-35 VDC, 16W	10-35 VDC, 3.5W
<b>Color LCD display (dia.)</b>	5" QVGA	7" HD QVGA	10.4" HD QVGA	5.6"	7"	10.4"	15"	12.1"	N/A
<b>Resolution (pixels)</b>	240 x 320	800 x 480	800 x 600	320 x 240	480 x 234	800 x 600	1024 x 768	800 x 600	Up to 1024 x 768
<b>Cartography</b>	Uses C-Map MAX, NT+, NT or NT wide SD-Cards			Uses C-Mapp MAX or NT+ C-Cartridges					
<b>Cursor Control</b>		Track Pad with Push for enter	Joystick	Joystick	Joystick	Trackpad	Joystick	Joystick	
<b>Memory</b>	Non-volatile								
<b>Waypoints/Marks</b>	5,000	10,000	10,000	500	500	1000	5000	5000	10,000
<b>Routes (50 waypoints max per rt., reversible)</b>	25, reversible	50, reversible	50, reversible	25	25	50	50	50	50
<b>Track Plots</b>	5,000	10,000	10,000	1000	1000	5000	10,000 divided into 5 Track memories	50,000 divided into 5 track memories	1000
<b>Video Input</b>	No	1	2	No	No	2	2	2	No
<b>Video Output</b>	No	No	1	No	No	Yes	Yes	Yes	No
<b>Type of User Points</b>	16, Alphanumeric								
<b>Plotting Intervals</b>	Distance (0.01, 0.05, 0.1, 0.5, 1, 2, 5,10 NM; Time (1, 5, 10, 30 sec, 1 min)								
<b>Depth Unit for Depth Line</b>	MT, FT or FM								
<b>Operating Temperature</b>	32° to 131° F (0° to 55°C)								
<b>Input/Output Format</b>	NMEA-0183 Ver 2.0								
<b>Antenna</b>	External or Internal	External or Internal	External	External	External or Internal	External	External	External	External
<b>Case Size/Weight</b>	5.8"W x 7.6"H x 1.8"D, 1.1 lbs.	9.6"W x 6.1"H x 2.6"D, 2.4lbs	13.1"W x 8.8"H x 2.1"D 4.4 lbs	8.2"W x 6"H x 2.7"D, 1.75 lbs	9.5"W x 5.9"H x 2.6"D, 2.4 lbs	13"W x 8.7"H x 2.1"D, 4.4 Lbs	14.9"W x 13.6"H x 3.9"D, 9.9 lbs	15"W x 13.5"H x 8.9"D, 18.7 lbs	5.5"W x 3.7"H x 3.2"D, 0.9 lbs.
<b>Waterproof Rating</b>	IP67								
<b>GPS/WAAS Receiver</b>	Receiver--L1, C/A/code; Channers--18; Accuracy--Better than 3m, 95% of the time; Max Solution Update Rate--10/sec; Cold Start (avg)--<44 sec; Warm Start (avg)--<37 sec; Hot Start (avg)--<11 sec; Cable Length--49 ft. NOTE: Accuracy is subject to change in accordance with DOD civil GPS user policy.								

	GPK-11	HDK-11	GPS-90/GPS-90D
<b>Overall Dimensions (x height):</b>	97 x 32 mm (flush/pole/rail mounting)		
<b>Weight:</b>	160 grams (without cable)		
<b>Cable:</b>	15 meter 8x28AWG		
<b>Input Voltage</b>	10-35Vdc.		
<b>Power Consumption</b>	0.8 W max		
<b>Electrical Interface</b>	TTL voltage levels, RS-232 polarity		
<b>Receiving Method/Frequency</b>	16 channels parallel (up to 3 for WAAS Satellites); 1575.42MHz (L1, C/A code)		
<b>Receiving Sensitivity</b>	Less than -135 dBm		
<b>Time to First Fix (TTFF)</b>	Warm start: 33 seconds (typical); Cold Start: 40 seconds (typical)		
<b>Accuracy Position</b>	Less than 2.5mCEP1 5.0m SEP2; GPS: (SA=Off, HDOP<4); Less than 2.0mCEP1 3.0SEP2; DGPS: (SA=OFF, HDOP<4)		
<b>Dynamics Acceleration</b>	Strong Signals <=4g; Weak Signals typical 1g		
<b>Altitude/Velocity</b>	1800 m/1850Km/h (515 m/sec)		
<b>DGPS Format</b>	WAAS; EGNOS; MSAS		
<b>Output Format/NMEA Output Messages</b>	NMEA-0183 Baud rate 4800 N81; GGA, RMC, GSA, GSV, TXT		
<b>Geodetic Datum</b>	WGS84		
<b>Operating Temperature/Storage Temperature</b>	from 0° to +60°C/from -20° to +85°C		
<b>Relative Humidity/Water Resistance</b>	95% non-condensing/IPX7		
<b>Static Compass Accuracy</b>	1° RMS when level		<b>GPS RECIEVER</b>
<b>Dynamic Compass Accuracy</b>	2° RMS (Best-in-Class)		<b>Receiving Channel</b>
<b>Heading Display Resolution</b>	0.1°		Parallel "MaxView" tracks 11 satellites
<b>Settling Time</b>	1 second (adjustable)		<b>Accuracy ** (at HDOP3 or less by C/A Code)</b>
<b>Heading Data Output Update Rate</b>	-10Hz--NMEA0183 - Adjustable up to 20 Hz --NMEA 2000@		Position: 2 to 10 meters
<b>Rate-of-Turn Range</b>	0° to 70° per second		<b>GPS/DGPS DISPLAY</b>
<b>Rate-of-Turn Accuracy</b>	1° per second		<b>Dipslay</b>
<b>Rate-of-Turn Data Output Update Rate</b>	2 Hz--NMEA0183 (adjustable up to 10Hz) --Adjustable up to 20 Hz--NMEA 2000@		LCD backlight by electroluminescent cell
<b>Pitch and Roll Range/Display Resolution/Boat Alignment/ Output Update Rate</b>	< 50°/0.1°/yes with software/2 Hz--NMEA 0183 (adjustable up to 10Hz) --Adjustable up to 20Hz--NMEA 2000@		<b>Display modes</b>
<b>Static Pitch and Roll Accuracy</b>	<1°		Position displays: Longitude/Latitude in increments of 0.0001, converted LORAN-C LOPs
<b>Dynamic Pitch and Roll Accuracy</b>	<3°		<b>Track Display</b>
<b>Supply Voltage/Current</b>	9VDC to 16VDC /<140mA		Display Range: 0.025, 0.05, 0.1, 0.2, 0.5, 1, 2, 5, 10, 20 nm (sm, km); Plotting Interval: 10, 20, 30 seconds, 1, 3, 5 minutes, 0.1, 0.5 nm (sm, km); Plotting Capacity: 2000 points
<b>NMEA 2000@ Load Equivalency Number (LEN)</b>	3		<b>Waypoint/Event Memory</b>
<b>Certifications &amp; Standards</b>	CE, IPX6, RoHS, IEC60945		A total of 400 waypoints with alphanumeric identifiers
			<b>Route Memory</b>
			20 routes of 20 waypoints each (reversible)
			<b>Position Update</b>
			20 routes of 20 waypoints each (reversible)
			<b>Input Data Format</b>
			NMEA 0183, RTCM SC-104
			<b>Output Data Format</b>
			NMEA 0183, C1F, Shipmate 0183
			<b>Power Requirements</b>
			11 ~ 40V DC, less than 5W
			<b>Case Size/Weight</b>
			4.8"H x 7.5"W x 2.7"D, Approx 2lbs.



25 Enterprise Zone Dr, Suite #2  
Riverhead, NY 11901  
Phone: 631-996-2690  
Fax: 631-996-2693  
www.si-tex.com



All SI-TEX products are backed by a Two-Year Limited Warranty. See warranty for complete details.

\*Depth ranges are for presentation only. Actual depth capability depends on quality of installation, type of bottom, salinity of water, etc.  
\*\*Requires speed data from speed sensor or GPS sensor  
\*\*\*Requires position data from GPS sensor  
Note: Guardian™ feature should be used as a tool in conjunction with other navigation such as Depth Sounders, Charts and Visual Sighting, and should not be relied upon as the sole means of navigation. SI-TEX Electronic Charting Systems and C-MAP MAX/NT+ Navigation Charts are not designed to replace standard government charts. Any electronic navigation device should be operated along with the prudent use of reliable manual backup material.  
Specifications subject to change without notice.

