

Gain setting

H: High frequency
L: Low frequency

The number shows the present set value of gain.

AF: Fishing mode
AC: Cruising mode

Range mode

R:M: Manual
R:A: Auto range
R:AS: Auto shift

Power Voltage

Alarm Set Status

← Arrival alarm
← XTE alarm
← Water temp alarm
← Speed alarm

Status of [F1]/[F2] key assignment

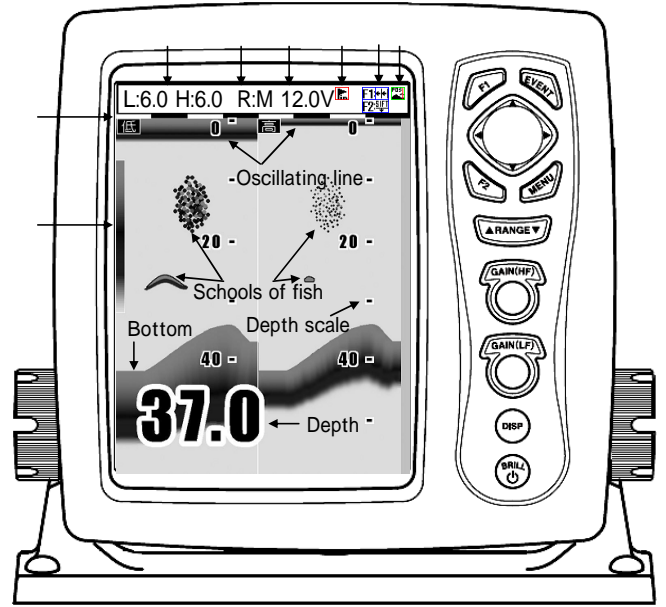
← Image speed
← Interference rejection
← Color rejection
← Noise rejection
← Shift
← Zoom range
← Zoom start
← A scope
← White line
← Background color

Status of [EVENT] key assignment

← Store position
← Store image
← Fishing hot spot

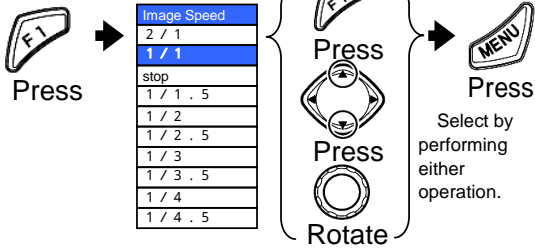
Time mark

Rainbow pattern



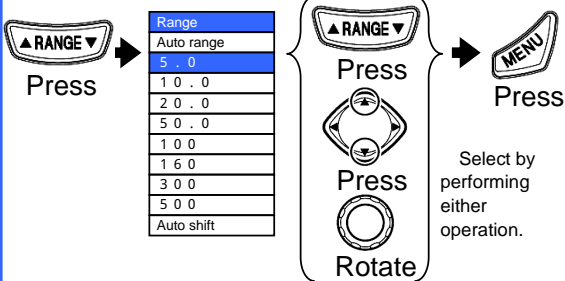
Select the setting of preset function ([F1]key / [F2]key)

The function differs depending on the [F1]/[F2] key setting]. In case of [Image speed]:

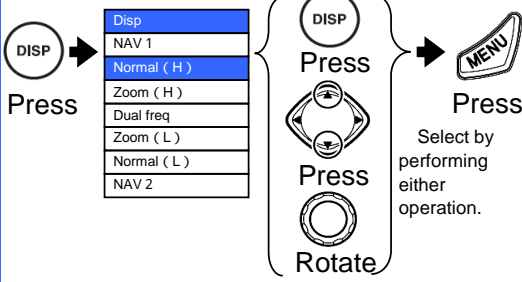


By continuously pressing the [F1]/[F2] key, a function assigned to each key can be selected.

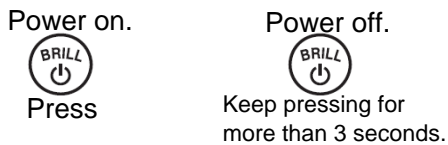
Select the range ([RANGE] key)



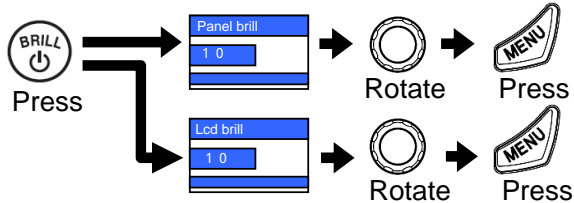
Select the display menu ([DISP] key)



Power on/Power off ([BRILL] key)



Adjust the brilliance ([BRILL] key)

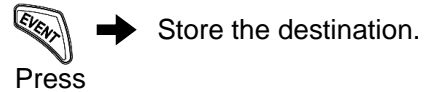


Every time when pressing the [Brill] key, the item is alternately displayed.

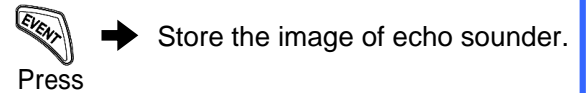
Preset the destination / Preset the image ([EVENT] key)

Depending on the [EVENT key set], the function differs.

In case of [Store pos]:

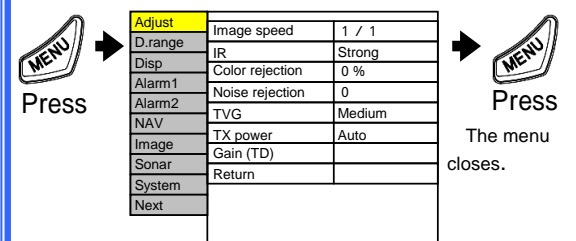


In case of [Store image]:



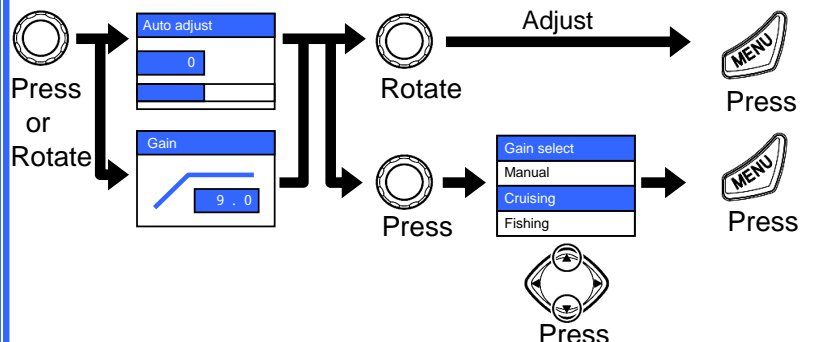
The navigation data such as GPS is necessary.

Display the menu ([MENU] key)



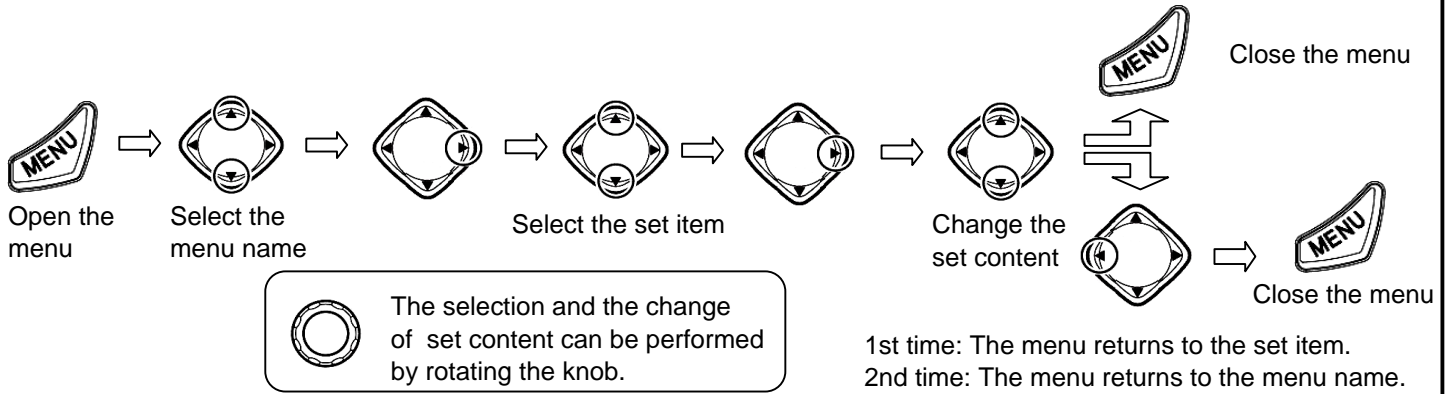
The menu appears.

Gain adjust / Gain select ([Knob] key)



[GAIN (HF) Knob] key can adjust high frequency.
[GAIN (LF) Knob] key can adjust low frequency.

How to operate the menu



Function of Adjust Set Menu

Adjust	Image speed	1/1
D.range	IR	Strong
Disp	Color rejection	0%
Alarm1	Noise rejection	0
Alarm2	TVG	Medium
NAV	TX power	Auto
Image	Gain(TD)	
Sonar	Return	
System		
Next		

Change the image speed.

The image speed becomes slow in order of [2/1] [1/1] ... [1/4.5].

When [stop] is selected, the image stops.

It rejects the interference with other echo sounder.

When [Strong] is selected, the effect of rejection is strong.

It rejects the weak noise appeared on the display.

The greater the number is, the stronger the rejection becomes.

It rejects the speck-like noise appeared on the entire image.

The greater the number is, the stronger the rejection becomes.

Set the TVG.

The deep depth gain increase in order of [Weak] [Medium] [Strong].

It sets the TX power.

The reduction in sensitivity due to signal attenuation in Gain(TD)

use and so on can be corrected.

You can make numerical value bigger at the time of lack of sensitivity.

Function of display range set menu

Adjust	Shift	0m
D.range	Zoom type	BTM.
Disp	Zoom range	10.0m
Alarm1	Zoom start	0m
Alarm2	Disp width	Center
NAV	Range preset	
Image	Return	
Sonar		
System		
Next		

It displays the image within the range starting with the set value.

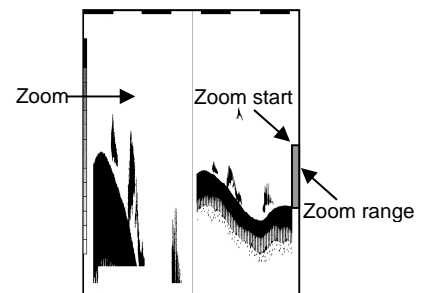
It selects the zoom type.

It sets the range of image selected in .

It sets the zoom starting position of image set in .

It selects the disp width.

It presets the range.



Preset of Range

Registration of the range can be easily changed with following operation. Preset the set value suitable for you purpose.

