

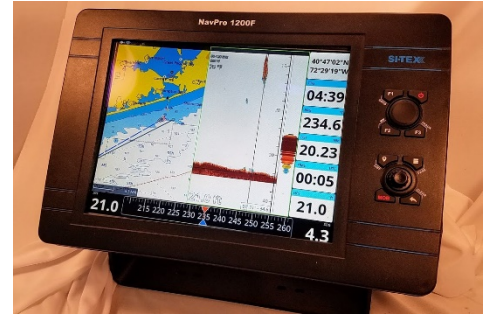


NavPro 1200F GPS Chart Plotter Series

Two versions available:

NavPro 1200C (GPS Chart MSRP \$2399.00)

NavPro 1200F (GPS/Chart/Fishfinder MSRP \$2599.00)



- 12" Hi-Res. Hybrid Touch Screen Display
- Heavy Duty Yoke mount for Bulkhead or Overhead Mounting
- NMEA-0183 & NMEA2000 Interfacing
- WIFI Interface
- Automatic Software Updates when in WIFI Coverage
- Captain Cloud automatically backs up all User Data to a Free Cloud Based Data backup Service for Waypoints, Marks, Events, and Track memories when in WIFI coverage.
- Mirror Screen Capability via Bluetooth connection allows user to download mirror app to his Android based smart phone and view and control the NavPro 1200 from Smart Phone.
- Compatible with Navionics+, Navionics Platinum+, C-Map Max, and C-Map 4D Cartography
- Comes bundled with a Navionics+ North America Chart card in the box
- Optional dedicated Remote Control Available
- Designed for easy flush mount without any special kit needed
- New CHIRP Sounder with selectable 300w, 600w, & 1kW outputs (NavPro-900F version)
- CHIRP Sounder has scroll back screen memory that allows user to quickly scroll back and pickoff a location to mark on Nav Chart.
- Uses the popular Almar CHIRP Transducers with TX ID will automatically setup the Sounder transducer interconnect
- Adapters available to allow the unit to be installed on older non-CHIRP transducers. Like 50/200 kHz Dual Frequency transducers and 120kHz Single Freq. transducers. This allows the NavPro 1200F to be used to retro fit onto any of the older SI-TEX Transducers. For example, any of the transducers used by the very popular old CVS-106 Sounders. 50/200 & 120kHz
- If customer doesn't have a need for CHIRP sounding he can use a traditional less expensive transducer option
- Internal Hi-Resolution 18Hz 72 Channel GPS Receiver & Antenna
- New User interface makes the unit very easy to operate and navigate with
- Full AIS Integration when interfaced to an AIS Unit

SPECIFICATIONS:

LCD Display Size 12.0"

Display Brightness 1250 NITS

Display Resolution 1024x768

Touch Screen – Yes, Capacitive Multi-Touch

Keyboard Backlight – Yes

Operating Voltage 10 to 35 VDC

GPS Receiver – Built-In High Resolution 18Hz 72 Channel
GPS/GLONASS

External GPS – Yes, optional via 6 pin Connector

Network Connections – NMEA-2000 (Optional Cable Required)

Dual NMEA-0183 Input/Output Ports

WIFI Connection – Yes

Bluetooth Connection – Yes

IPX6 Waterproof Rating

Operating Temperature range -10°C to +60°C

Dimensions – 15.3" Wide x 10.9" High x 5.8" Deep

2 Year Warranty

INCLUDE IN THE PACKAGE:

NavPro 1200F Display Unit
C-Map 4D Continental Chart Card
Mounting Bracket
Mounting Screws
Combination Power Data Cord
Sun Cover
Installation & Operation manual



NavPro 1200F GPS Chart Plotter Series