

ORION

New! Orion 10 Chartplotter/Chart Sonar

Versatility and Professional Features in One Affordable Package

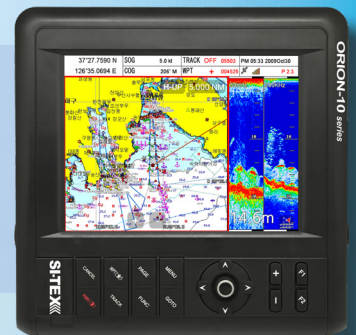
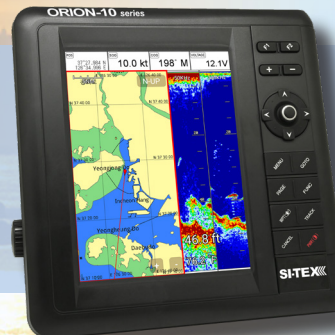
- 10.4" Hybrid Touch Screen Display
- Heavy-Duty Silicone Keypad
- Advanced C-MAP 4D Cartography
- Built-in 52 Channel GPS Receiver With U.S., GNSS, Russian GLONASS, European GALLILEO Networks
- Commercial Fishing Plotter Mode



ORION 10 series

See Far and Wide With Versatile Mounting Options!

- Install in Landscape or Portrait Orientation to Meet Your Needs
- Easy Menu Commands Rotate Display
- Great for Split-Screen Displays of Chart/Echosounder
- View the Data You Want, the Way You Want it

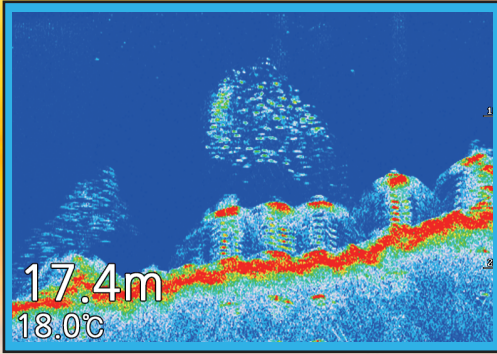


Quickly Manage and Store Tons of Data Using C-MAP 4D Charts

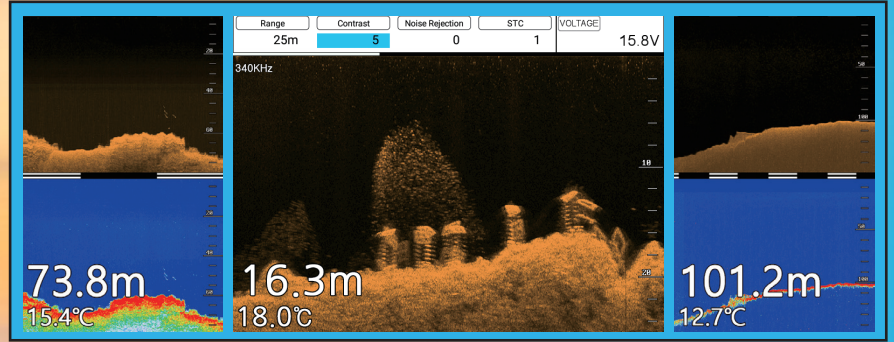
- Easily Select Areas/User Data to Erase or Store in Memory
- Store 100,000 Waypoints/Marks, 50,000 Track Points and 100 Routes
- High-Res Bathy, Dynamic Tides & Currents, Easy Routing, Marina Port Plans and More



Powerful Echosounder Performance for Recreational and Commercial Fishing



- 50kHz/200kHz Dual Frequency
- 600W or 1.5kW Output Based on Transducer
- Advanced Digital Fishfinder Performance
- 256 True Colors for Target Discrimination



- Optional 340kHz Downscan for High-Definition Side Scanning
- Pinpoint Fish and Structure up to 328' From the Boat

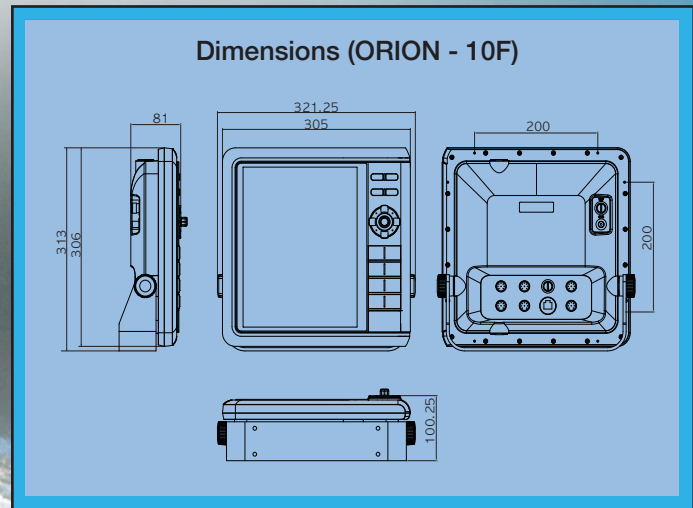


Wirelessly Link Orion Units for Easy Helm Configuration



Easily Share Data Between Multiple Displays Via Bluetooth

Compact Footprint for Easy Bracket or Flush Mounting



Orion 10 Series Brings Big-Time Navigation and Fishfinding to Any Size Vessel