

NEW

KODEN

Digital Searchlight Sonar

(((DIGITAL)))

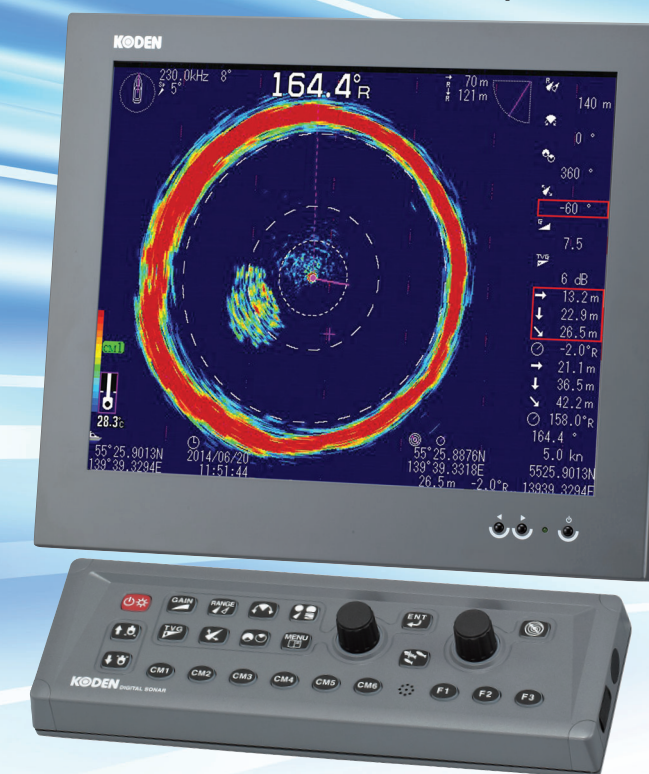
KDS-5500BB

High sensitivity over long range!

80/140/180 kHz

Selectable Frequency at time of purchase

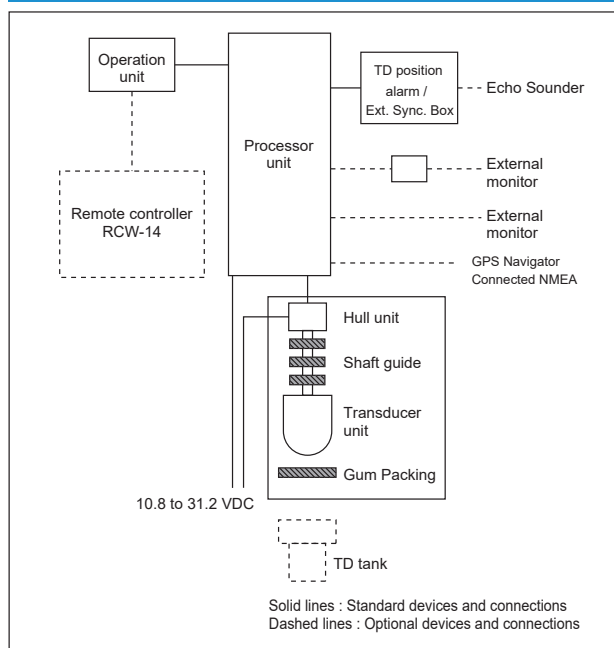
17 inch LCD monitor (optional)



Black box type

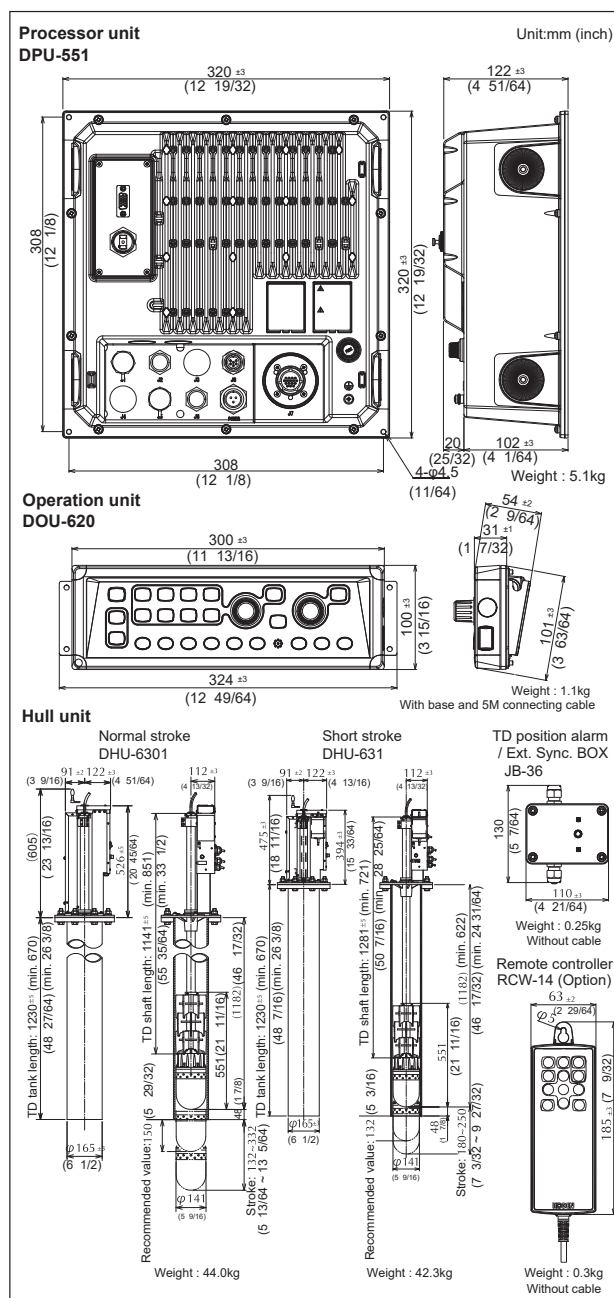
SPECIFICATIONS	
Model	KDS-5500BB
Output power (RMS)	1.5 kW
Output frequency	80 kHz, 140 kHz, 180kHz (Select at time of purchase)
Tilt angle	5° to 90° (1° step)
Beam angle	80 kHz : 19° / 140 kHz : 12° / 180 kHz : 10°
TD stroke	150 to 380 mm (Recommended value 150 mm)
Display size and type	Any monitor with VGA resolution (Owner supplied)
Basic ranges	10 to 1000 (m), 10 to 700 (Lfm), 30 to 3000 (ft), 10 to 600 (fm) (8 ranges can be set to users choice)
Range units	m, fm, ft, Lfm
Scanning sector angles	Sonar mode 5° step: 5°, 25°, 45°, 85°, 125°, 165°, 205°, 360° 10° step: 10°, 30°, 50°, 90°, 130°, 170°, 210°, 360° 15° step: 15°, 45°, 75°, 105°, 135°, 165°, 225°, 360° 20° step: 20°, 60°, 100°, 140°, 180°, 220°, 260°, 360° Bottom scan mode 3° step: 3°, 27°, 45°, 63°, 93°, 117°, 147°, 177° 5° step: 5°, 25°, 45°, 65°, 95°, 115°, 145°, 175°
360° Scanning range(m)	20 40 60 80 100 120 160 180 200 240 400
Scanning time	5° step 6.3 8 10 11.8 14 15.8 19.5 21.6 23.5 27.5 43.3 10° step 3.7 4.7 5.6 6.5 7.6 8.6 10.6 11.5 12.5 14.4 22.4 15° step 3.3 3.7 4.3 4.9 5.7 6.4 7.9 8.2 8.9 10.3 15.7 20° step 3.3 3.4 3.8 4.2 4.8 5.2 6.4 6.6 7.3 8.1 12.2
Bearing center	1° step
Presentation modes	Sonar, Off-center, Bottom scan, Echo sounder, 2 Mode Display, One line
Off-Center	Fore, Back, Left, Right
Target lock	Reverse, Horizontal, Horizontal + Vertical, Marker + Horizontal, Marker + Horizontal + Vertical
Presentation colors	8 colors, 16 colors
Functions	TVG, Color rejection, Dynamic range, Compass display, Pulse width, Output power control, Noise reduction, A-scope, CM key, Frequency bandwidth, Image correction, Bearing display, TD auto up, Sona-Tone™
Language	English, Japanese, Korean, Spanish, Thai, Traditional Chinese, Greek, Italian, Portuguese, Burmese
Input data format and sentences	NMEA0183 GGA, GLL, HDG, HDM, HDT, RMC, THS, VTG, ZDA
Output data format and sentences	NMEA0183 DBT, DPT, GGA, GLL, MTW, RMC, TLL, VTG, ZDA
NMEA ports	Total 1 : input / output
Power supply Processor unit	10.8 to 31.2 VDC
Hull unit	10.8 to 31.2 VDC
Power consumption Processor unit	70 W or less (24 VDC)
Hull unit	70 W or less (24 VDC)
Operating temperature	-15 °C to +55 °C
Water protection	-

CONNECTIONS



EQUIPMENT LIST	
Standard equipment	Processor unit 1
	Operation unit 1
	Hull unit (Normal stroke / Short stroke) 1
	Accessories for Processor unit 1
	Installation materials for Hull unit 1
	TD position alarm / Ext. Sync. Box 1
	DC power cable 1
	Operation manual, Installation manual, Quick Reference 1
Options	Remote controller, PVC TD tank, FRP TD tank, Shaft guide for FRP tank AC rectifier unit, Connecting cable, 17 inch LCD monitor

DIMENSIONS AND WEIGHT



• Design and specifications are subject to change without notice.

KODEN Koden Electronics Co., Ltd.

Tamagawa Office:
2-13-24 Tamagawa, Ota-ku, Tokyo, 146-0095 Japan
Tel: +81-3-3756-6501 Fax: +81-3-3756-6509
Uenohara Office:
5278 Uenohara, Uenohara-shi, Yamanashi, 409-0112 Japan
Tel: +81-554-20-5860 Fax: +81-554-20-5875

overseas@koden-electronics.co.jp
www.koden-electronics.co.jp

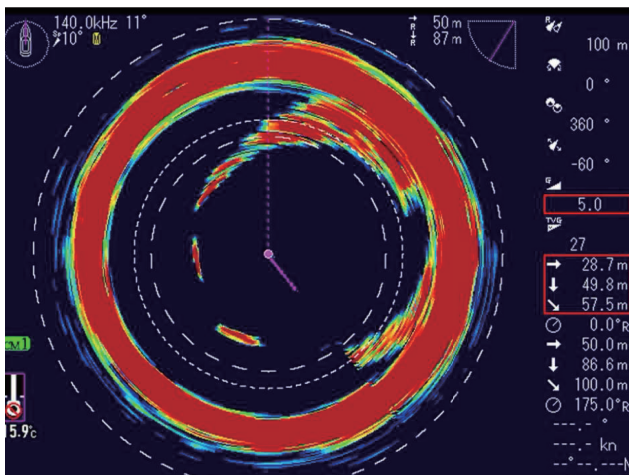
Safety precaution To ensure proper and safe use of the equipment, please carefully read and follow the instructions in the Operation Manual.

For details, please contact:

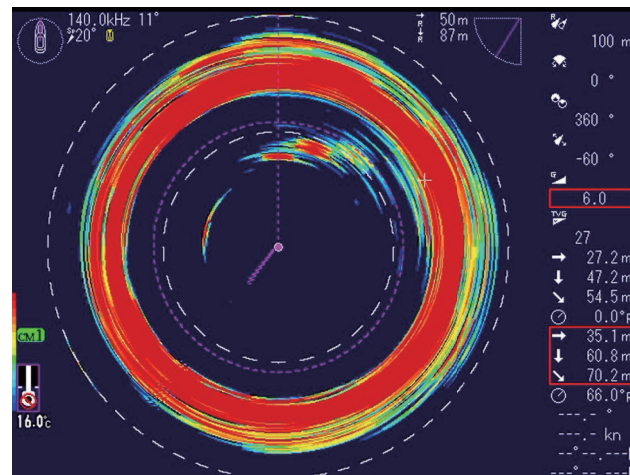
High Sensitivity fixed frequency model KDS-5500BB

Image comparison of KDS-5500BB and Broadband sonar

Shallow water (100m)

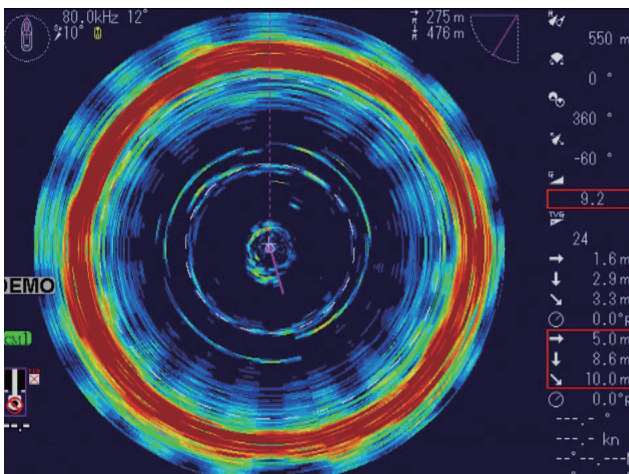


KDS-5500BB 140kHz

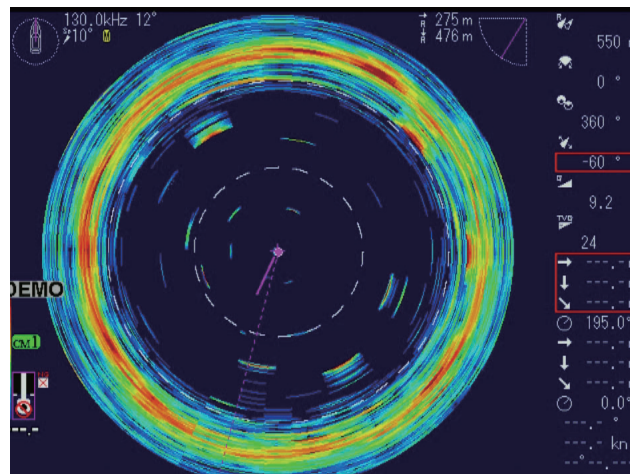


Broadband 140kHz

Deep water (550m)



KDS-5500BB 80kHz



Broadband 130kHz

Recommended sonar selection

What fits you better?

- ▼ Target specific fish species and use only one frequency:
KDS-5500BB
- ▼ Using sonar for different fishing, different areas, different seasons:
Broadband Sonar

Featured option

Reduce image distortion using motion sensor (AS model)

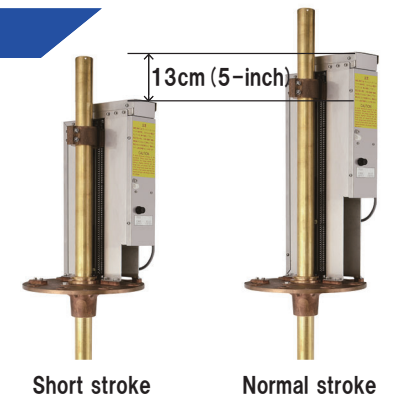


When stabilizer function is activated, it reduces image distortion caused by pitch and roll of the vessel in high seas.

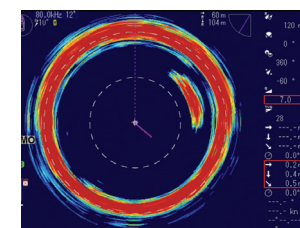
Compact hull unit

Limited room for installation?

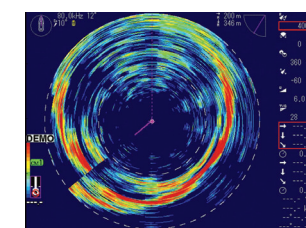
- ▼ Solved with a short hoist version, requires 13cm less room.



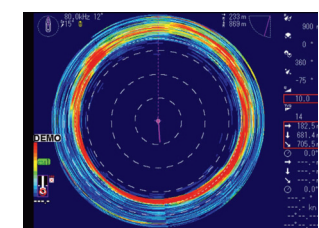
Screen image of KDS-5500BB/80 kHz



Sardine



Red snapper



Depth 680m