

TABLE OF CONTENTS

Radars.....	1
Fishfinders.....	2
Sea Water Temperature Indicator.....	3
Multi-function Charting Systems.....	4
Auto Pilots	8
Weatherfax/Communications/AIS.....	9
Heading Sensors.....	10
GPS/WAAS	11



All SI-TEX products are backed by a Two-Year Limited Warranty. See warranty for complete details.



25 Enterprise Zone Dr, Suite #2
Riverhead, NY 11901
Phone: 631-996-2690
Fax: 631-996-2693
www.si-tex.com

*Depth ranges are for presentation only. Actual depth capability depends on quality of installation, type of bottom, salinity of water, etc.

**Requires speed data from speed sensor or GPS sensor

***Requires position data from GPS sensor

Note: Guardian™ feature should be used as a tool in conjunction with other navigation such as Depth Sounders, Charts and Visual Sighting, and should not be relied upon as the sole means of navigation. SI-TEX Electronic Charting Systems and C-MAP MAX/NT+ Navigation Charts are not designed to replace standard government charts. Any electronic navigation device should be operated along with the prudent use of reliable manual backup material.

Specifications subject to change without notice.

RADARS

T-900 Series Digital Dual Range Radars 8.4" True-Color Daylight Viewable LCD Display

Hyper-Digital Processing™ (HDP) • Dual Range Radar • Brilliant 8.4" color LCD daylight viewable display anti-reflective glare coating for outstanding viewing • True-color radar feature displays echoes in different colors depending on signal strength • True Trail function clearly identifies moving targets from stationary targets even while your vessel is moving. • Easy operation with dedicated control knobs for Gain and STC • RGB output for connecting external monitor. • Accepts CCD camera input. • Warning Zone alerts • Optional ATA (Automatic Tracking Aid) • Optional AIS interface. • Built-in flush mounting system

Specifications, page 13



MDS Radar Sensor Series Adds Full-Featured Radar Capabilities to your Chartplotter

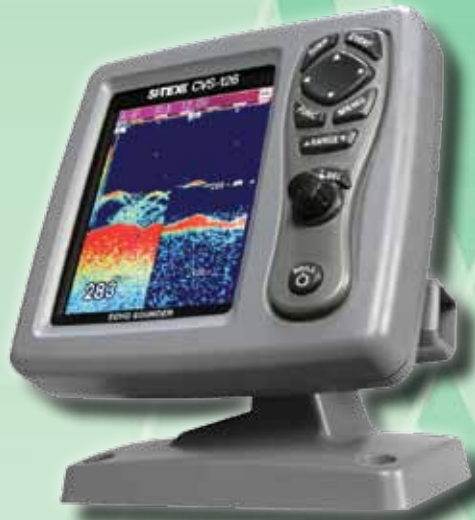
Choose from various models, MDS-1 - 2kW, 24NM, 12.4" Radome; MDS-8-2kW, 24NM, 20" Radome; MDS-9 - 4kW, 36NM, 23.5" Radome; • Selectable range scales from 1/8NM • Displays complete overview of vessel traffic, weather and fixed target data • Other features include radar overlay on charts**, color shades of target intensity, split-screen displays, FTC, STC, adjustable VRM and EBL

**Heading sensor is required for chart overlay

Specifications, page 13



FISHFINDERS

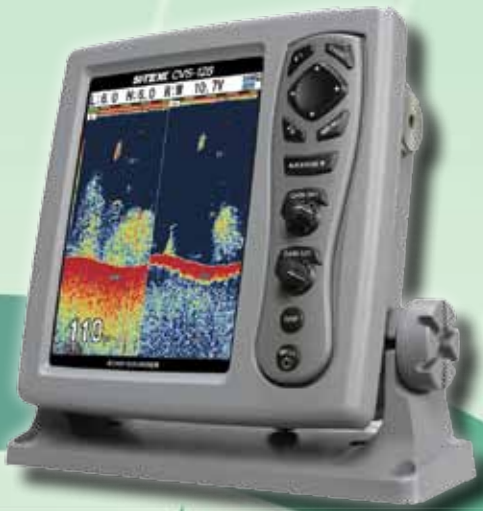


CVS-126

5.7" Color LCD Echo Sounder 600W • 50/200kHz

Digital signal processing • Automatic Functions • Easy Operation • Sunlight Viewable • Brilliant 5.7" color LCD display with 8, 16, or 64 color levels and an anti-reflective coating for excellent readability in direct sunlight • Auto fishing & Cruising modes • IPX5 waterproof rating • Sleek, compact case design with built-in flush mounting • Audio and visual alarms • Available with various optional transom & thru-hull transducers.

Specifications, page 12



CVS-128

8.4" Color LCD Echo Sounder 1kW or 600W • 50/200kHz

Superior digital filtering capabilities • Daylight viewable with 8, 16 or 64 color levels & anti-reflective coating • Auto Functions • 1000 or 600 Watts of power with 8 ranges from 10-3600' • Auto fishing & Cruising modes • Audio & Visual alarms • Real-time, multi-color A-scope • RGB output for connecting to external VGA monitor • Sleek, waterproof (IPX5 rating) case design with built-in overhead and flush mounting

Specifications, page 12



SVS-650

All Digital Sounder

6.5" Sunlight Viewable LCD Display 600W • 50/200kHz

The SVS-650 features a large 6.5" Direct Sunlight Viewable High Definition LCD Display (480x750), in a vertical format to provide maximum sonar resolution • Digital technology eliminates unwanted noise and provides the clearest images possible at all times • Dual-Frequency (50/200kHz) operation with Superior fish detection and bottom discrimination using the new SI-TEX All Digital Sounder System. Instantly adapts to changing seabed and water conditions providing fully automatic "hands free" operation • 600W (rms) with 24 preset ranges from 0-4800'

• Stores up to 10 screen images & Events in built-in memory for recall later • Other features include: Bright anti-reflective display, easy operation, Depth, Temp, & Fish alarms, White/Black line feature, Nav Displays • IPX7 waterproof rating • 10.8~36.0 VDC,

Specifications, page 12

FISHFINDERS

CVS-1410

10.4" Color TFT LCD

Sunlight Viewable Display

1kW • 50/200kHz

Dual-Frequency (50/200kHz) operation with Digital Filtering (KDF™) optimizes the gain for Superior clutter suppression and signal to noise ratio, faster update rate for increased performance in shallow water • Detects fish close to the Seabed at depths never before possible • The affordable 1kW CVS-1410 series equals or beats the performance of the conventional sounders with 3 times the power output • 1kW output with 8 customizable ranges from 10-6000' • High-speed pulse rate transmission of 5000 times per minute for enhanced shallow water detection • Display Modes: Normal, Dual Freq., Bottom lock, Zoom, Bottom Zoom, Auto Zoom, Shift, Auto Shift, A-Scope, Trackplotter, Compass, Multiple Nav Info, Audio/visual alarms, White line • Designed for Over-head, Deck Mount, or Flush mounting • 10.8~31.2 VDC

Specifications, page 13



ES-502D

Fishfinder Module

Dual-Frequency 50/200 kHz operation • 500/1000 watts of power • Real-time, multicolor A-Scope • Full-screen or split-screen presentations • Other features include zoom; interference rejection and noise filter; shallow, deep, fish and temperature alarms • Transducers sold separately • Interfaces with all chartplotters

Specifications, page 14



FISHFINDING Accessory

SST-110

Sea Water Temperature Indicator

4 digit LCD Display • Rugged water-resistant construction and advance features • Ideal for recreational and commercial fishing vessels • View accurate water temperature at a glance in 0.01 degree Fahrenheit/Celsius resolution • Find favorable temperature zones and pinpoint critical "temp breaks" • Easily calibrated with front panel keys • Set high and low temperature alarms • Five levels of backlighting • Nonvolatile memory allows for retaining settings • Output standard NMEA 0183 water temp data and works on both 12 & 24 VDC systems • Draws .035 amps • Transom mount and thru-hull temperature transducers available • Fully compatible with Dytex sea water temperature indicators

Specifications, page 15



MULTI-FUNCTION CHARTING SYSTEMS



Select a SI-TEX Charting Systems from 5" to 15". Daylight Viewable Color LCD Displays with optional Fishfinder, Radar and AIS.

designed for 

Standard Charting System features:

- Ultra-fast processor
- Compatible with the C-Map MAX charts.
- Multi-function GPS Charting/Fishfinder/Radar unit with optional sensors. You can even add AIS receivers.
- Interfaces with DSC VHF radio for buddy track capability.
- Guardian™ Programmable Anti-Grounding feature
- Depth Graph feature accepts input from onboard sounder or optional Active Transducer
- Split-screen displays.
- North-up or Track-up modes.
- Port and Services Info, Find Function and Tide Info.
- Backlit softkeys and easy-to-use on-screen menu system
- GOTO and MOB functions.
- Selectable languages.
- Coordinates displayed in Lat/Lon, and Loran TD's,
- Data can be downloaded onto optional C-Map data card.
- NMEA-0183 dataports for interfacing with other on-board electronics.
- Weatherproof construction

MULTI-FUNCTION CHARTING SYSTEMS

EC5 5" QVGA 256 Color LCD Daylight Viewable Display

Available with built-in 600W Dual-frequency fishfinder • Quick disconnect mount, and surface mount • IP67 waterproof rating • Uses C-Map SD • Available with Internal or External GPS Antenna

Specifications, page 14



EC7 7" HD WVGA Color LCD High Definition Daylight Viewable Display

Available with Internal or External GPS Antenna, and Built-in 600W Dual-frequency fishfinder • Quick disconnect mount, and Flush mountable • Fully Waterproof to IP67 rating. Uses C-Map SD.

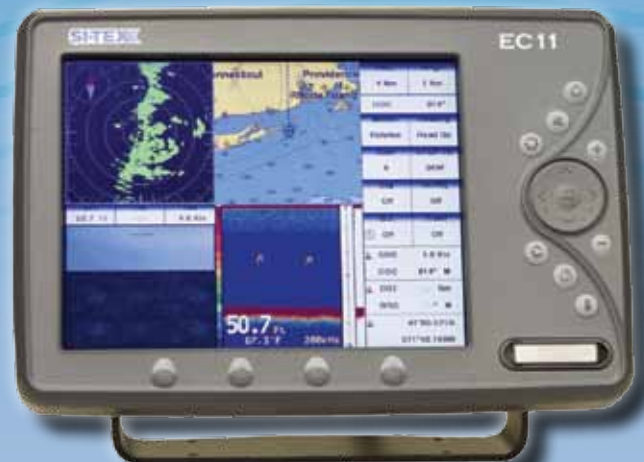
Specifications, page 14



EC11 10.4" HD SVGA Color LCD Sunlight Viewable Display

Includes external GPS/WAAS antenna • Two Video Inputs, 1 Video Output • Fully Expandable with addition of Optional MDS Radar Ant, BB Fishfinder, and AIS Receiver • Fully Waterproof to IP67 rating • Uses C-Map SD.

Specifications, page 14



MULTI-FUNCTION CHARTING SYSTEMS



Trawl Plot 12 SD
12.1" SVGA
Commercial Chart Plotter

Designed for the professional • *One-Touch* event mark for easy storage and retrieval of gear marks • Stores up to 5000 waypoints/marks, 50 routes and 50,000 track points in 5 track memories • Unlimited storage of track/route data on secure digital memory cards
Specifications, page 15



ColorMax 6
6" Chartplotter

Stores up to 500 waypoints/marks, 25 routes and 1000 track points • Quick-release snap mount, surface mount kit and protective cover included
Specifications, page 16



ColorMax 15
15" Chart Plotter

Video output • Two video ports allow you to connect existing/optionally available cameras • Stores up to 5000 waypoints/marks, 50 routes and 10,000 track points • Bracket mount, surface mount kit and protective cover included
Specifications, page 16

MULTI-FUNCTION CHARTING SYSTEMS

Explorer Plus Charting System Control Unit

Connects to an existing onboard VGA monitor or add just about any size "off-the-shelf" PC monitor for a convenient two piece, full-featured charting system • Stores up to 1000 waypoints/marks, 50 routes and 5000 track points • Available with or without GPS/WAAS receiver

Specifications, page 15



ColorMax Wide 7" Panoramic 16:9 Chart Plotter

Stores up to 500 waypoints/marks, 25 routes and 1000 track points • Quick-release snap mount, surface mount kit and protective cover included

Specifications, page 16



ColorMax Pro 10.4" Chart Plotter

Full alphanumeric keypad • Two video ports allow you to connect existing/optionally available cameras • Second-station repeater capability with video output • Stores up to 1000 way-points/marks, 50 routes and 5000 track points • Bracket mount, surface mount kit and protective cover included

Specifications, page 16



AUTOPILOTS

SP-70 & SP-80 Autopilot

User Friendly Autopilot for Accurate Steering



Clip mounted allowing both fixed and hand held operation • Suitable for small to mid-sized vessels • Capable of operating on most standard types of steering systems • Waterproof Control Head • Automatic yaw, sea state and trim • Optional full function Second Station • "Nav" mode accepts NMEA 0183 information • Digital display of rudder angle and operating mode • Optional analog rudder angle indicator • One NMEA 0183 Heading Output (HDM & HDG) • Large LCD display with eight brightness levels for comfortable viewing • Built-in diagnostics and self tests plus visual and audible alarms • Reliable in any sea and weather condition •



Easy to install and fully compatible with your onboard instruments • Ten selectable steering parameters for both Fast and Slow modes • Extended 3 year warranty • Meets CE requirements

Specifications, page 17



SP-36 Autopilot

Virtual Feedback for Enhanced Auto Steering

Auto Learning Intelligent Steering Technology: IST • Auto SETUP: Automatic drive detection, automatic pilot calibration & automatic compass calibration • Auto Sea State for enhanced reliability in all weather conditions • Crystal clear Sunlight Viewable TFT LCD Display or silver backed high contrast monochrome LCD • Advanced Power Features includes No Drift course: Automatic Leeway Control (ALC) • Proportional Rate Control provides smooth response at fast cruising speeds •

GPS Nav mode provides precise adaptive track steering • NMEA 0183 Input/output ports • Quick Turn Selection: Fish Zag, Continuous Circle, U-Turn and Emergency MOB turn • Simple touch 8 button illuminated keypad • Multi-language capability configurable in English, French, Spanish, Italian and others • Waterproof control head commercial grade to IP67 Standards • CE compliance for EMI & RF immunity • Extended 3 year warranty • 9 Level backlit LCD display • Color head gives you RED Night Vision mode for comfortable viewing in all ambient conditions • Pre-defined parameter sets for stern drive • Multiple steering capability for Fast and Slow Speeds • Simple to use course knob with mechanical detent • Multi-station capability with security station lock • Automatic trim • Adjustable yaw, turn rate and rudder settings • PORT and STBD dodge buttons for collision avoidance • Fully compatible with onboard NMEA instruments and most steering systems

Specifications, page 20

WEATHER FAX/ COMMUNICATIONS/AIS

AIS Radar

The AIS Radar receives VHF transmissions from vessels carrying AIS transponders to display target data from up to 30 vessels on 5" monochrome LCD matrix, radar like display. • Any vessel on the screen can be selected to display vessel's MMSI number, name, course over ground, speed over ground, range, latitude and longitude. • Each vessel's status is independently labeled so the user can see if a vessel is underway, at anchor, fishing, etc. This information is sent continuously and is useful in navigating, traffic monitoring and collision prevention. • Receives NMEA input (RMC) from the vessels GPS which puts the user at the center screen. All other AIS carrying vessels are displayed with bearing and range relative to the user. • Zoom feature allows 6 ranges to be selected from 1, 2, 4, 8, 16 and 32 NM. • An alarm can be selected to give an audible warning if a vessel enters a preset range ring. • 161.975 and 162.02 MHz operation. • Easy to install, requires optional standard marine VHF antenna and GPS input.

Specifications, page 18



AIS Black Box Receiver MKIII

Receives VHF transmissions from vessels carrying automatic identification system transponders. • Connects to manufacturer's Charting Systems that support AIS input to display target data from an unlimited number of vessels and overlay AIS target data on marine charts • Receives class A and B AIS transmissions • Included SeaClear Charting software gives you capability of displaying AIS vessel data on your PC marine charts plus the receiver also works with many PC software applications that have AIS capabilities • Easy to install

Specifications, page 19



NAV-FAX 200

Your Global Connection at Sea

Includes a data interface port, cable and Mscan Meteo Lite V3.02 Weather Fax Software on CD. • Tune to international, commercial and amateur frequencies, including the BBC, Radio Moscow and China Radio International. • Monitor ham radio. • Crystal controlled, fully synthesized receiver circuitry with 1 microvolt sensitivity. • Large flywheel-balanced knob with four-level variable tuning rate. • Large front-panel LCD displays frequency and signal strength. • Ten instant memories for fast storage and recall of most-used frequencies. Also selects programmed channel for power up. • Three inch, voice optimized, top-mounted speaker, driven by two watts of audio output. • Minimum system requirements: W95/98/ME/2000/XP/Pentium100, 24MB, mouse and sound card. • Package includes audio cable for connection to PC • Long-wire antenna included

Specifications, page 20



HEADING SENSORS



HDK-11 Gyro Compass

Better than 1° heading accuracy in static conditions • Best-in-class 2° heading accuracy in rough seas conditions • Solid State Compass provides Heading Data • Three-axis accelerometer/gyro provides pitch & roll data, and Rate of Turn data • Only recreational heading sensor that uses a three-axis rate gyro • Compass calibration can be easily done on any display or PC • Easily mounts on any angled bulkhead • IPX6 waterproof enclosure • Default 10Hz update rate for heading (HDG) • Outputs NMEA 0183 and NMEA 2000 data simultaneously

Specifications, page 19



Vector Pro G1 GPS Compass

Compatible with NMEA-0183 & NMEA-2000 Equipment • Better than 0.60 Deg. Heading Accuracy • 90° Deg. Rate of Turn Tracking • Provides Heave, Pitch, and Roll Information • 20Hz maximum Position & Heading update rates. • Pre-programmed default settings for HDG, ROT, COG/L, Time & Date • Integrated Gyro & Tilt sensors for fast start up and Heading updates

Specifications, page 17

Small Compact all-in-one maintenance free unit • Fully



Vector Pro G2 GPS Compass

Accurate, stable, fast start-up, compact and affordable GPS Gyro Compass • Provides 2D heading and positioning data or pitch

and roll to radar, sonar, chart plotter, autopilot or AIS • Hi Speed NMEA 0183 interface with provision for external RTCM SC-104 differential corrections • Supplied with 49 feet of cable. • Provides 2D heading and positioning data plus Heave, Pitch and Roll information to Radar, Sonar, Navigation Systems, Autopilots and A.I.S.

Specifications, page 17

GPS/WAAS

GPK-11

Smart SDGPS Sensor Antenna based on a 16 Ch. GPS • Delivers better than 3 meter accuracy • Low profile housing, Pole or Flush mountable • IP67 • Works with any Si-Tex Chartplotter • Outputs NMEA-0183 GGA, RMC, GSA, GSV, TXT • Inputs Voltage 10vdc to 35vdc @0.8W • Works with any Si-Tex unit and any unit requiring NMEA-0183 input of GPS

Specifications, page 19



GPS-95CP

Affordable Chart Plotter with Brilliant 4.3" Color LCD Display

GPS/WAAS Designed for 

4.3" color TFT LCD high-resolution display for optimum viewing under direct sunlight. • Features new ultra-fast processor • GPS/WAAS 16-channel receiver. Offered with external (GPS-95CP) or internal (GPS-95CPI) antenna. • Stores 2000 waypoints, 100 routes and 50,000 track points. • North-up, True-motion, Course-up and Heads-up modes • Built-in worldwide background chart • Arrival, Anchor, Off course and Interval timer alarms • Pointing device controls on-screen cursor to plot, scroll, pan, and zoom • Softkeys and comprehensive on-screen menu for easy access to all system features • GOTO, MOB functions. Unlimited storage of track and route data on optional XD cards. • Overlays AIS target data on marine charts with optional AIS receiver. • NMEA-0183 data port • Weatherproof construction.

Specifications, page 18



GPS-90MkII

Differential GPS/Track Plotter with Full Keyboard Entry

Graphic navigation pages • Track plotter • Large display • Full keypad allows quick waypoint entry • Repeatable accuracy to ten feet • Large, easy-to-read backlit Lat/Lon or Loran LOP display • Graphic and digital compass displays • "Electronic Fairway" displays boat on rhumbline course, cross-track error plus progress to desired waypoint • 400 nameable waypoints and event-memory storage • Automatic Lat/Lon to LOP Conversion to transfer favorite Loran fishing hotspots • MOB mode • NMEA 0183 data port • Rugged, weatherproof construction

Specifications, page 18



	CVS-126	CVS-128
Display	5.7" TFT Color LCD (240 x 320 pixels)	8.4" TFT Color LCD (640 x 480 pixels)
Display Colors	8, 16, 64 or monochrome	8, 16, 64 or monochrome
Power Requirements	10.8-31.2 V DC	10.8-31.2 V DC
Power Consumption	10W or less at 12V DC	25W or less at 12V DC
Operating Frequency	Dual Frequency 50/200 kHz	Dual Frequency 50/200 kHz
Output Power	600W	600W/1000W
Depth Ranges*	8 ranges selectable from 0 to 2800'	8 ranges from 10 to 3600'
Zoom Ranges	10 - 650 feet (23 steps)	10 - 650 feet (23 steps)
Audible Alarm	Fish, bottom, depth, temperature, speed**, arrival***, XTE***	Fish, bottom, depth, temperature, speed**, arrival***, XTE***
Image Speed	9 levels plus stop (2/1, 1/1, Stop, 1/1.5, 1/2, 1/2.5, 1/3, 1/3.5, 1/4, 1/4.5)	9 levels plus stop (2/1, 1/1, Stop, 1/1.5, 1/2, 1/2.5, 1/3, 1/3.5, 1/4, 1/4.5)
Auto Functions	Depth range, Shift and Gain	Depth range, Shift and Gain
Input Format	NMEA0183 (GGA, GLL, ZDA, VTG, RMC, MTW, VHW, MWV, HDT)	NMEA0183 (GGA, GLL, ZDA, VTG, RMC, MTW, VHW, MWV, HDT)
Output Format	NMEA0183 (DBT, DPT, GGA, GLL, MTW, RMC, TLL, VHW, VTG, ZDA, HDT, MWV)	NMEA0183 (DBT, DPT, GGA, GLL, MTW, RMC, TLL, VHW, VTG, ZDA, HDT, MWV)
Case Size/Weight	7.2"W x 7.2"H x 4.1"D, 2.9 lbs.	9.5"W x 9.5"H x 4.5"D, 7.2 lbs.
Display Modes	Normal (H/L), zoom (H/L) dual-frequency, NAV 1, NAV 2, A-scope	
Zoom Modes	Bottom, Bottom discrimination, Zoom, Bottom zoom, Bottom follow zoom	
Video Output		VGA Monitor Output via optional CW-576-0.5m Cable

Transducers-CVS-126, CVS-128, SVS-650, CVS-1410

Transom w/temp and speed (Beam angle: 45° @ 50kHz, 11° @ 200kHz)	250/50/200ST-CX
Bronze thru-hull w/ temp only (Beam angle: 45° @ 50kHz, 11° @ 200kHz)	1700/50/200T-CX
Bronze thru-hull w/temp only (Beam angle: 22°x45° @ 50kHz, 6°x11° @ 200kHz)	307/50/200T-CX
Bronze 12° tilt-element w/temp for 8° to 15° hull deadrise (Beam angle:45°@50kHz,12° @200kHz)	B-60-12-CX
Bronze 20° tilt-element w/temp for 16° to 24° hull deadrise (Beam angle:45°@50kHz,12° @200kHz)	B-60-20-CX
Bronze thru-hull w/temp and speed (Beam angle: 45° @ 50kHz, 11° @ 200kHz)	500/50/200ST -CX
Digital A Cable: Adapts ALL versions of the CVS-106 50/200 dual freq. transducers to new SVS-650, or CVS-126/128	
Multiplex Box: Converts dual element dual-frequency Transducers of older sounders to work with new SVS-650, CVS-126, CVS-128, CVS-1410 Sounders.	
1kW, Transom w/temp and speed (Beam angle: 45° @ 50kHz, 11° @ 200kHz)	250C/50/200ST-CX
1kW, Bronze thru-hull w/ temp only (Beam angle: 22° x 45° @ 50kHz, 6°x11° @ 200kHz)	307/50/200T-CX
1kW, Bronze w/temp recommended for deep water use (Beam angle:14°x21°@50kHz,3°x5°@200kHz)	707/50/200T-CX
1kW, Twin Beam Wide Angle Stainless thru-hull w/temp. (Beam angle: 25°@ 50kHz, 25°@ 200kHz)	SS270W/50/200T-CX

SVS-650

Screen Format	Portrait
Display Screen	Wide 6.5" color TFT LCD (750 x 480 pixels)
Case Size/Weight	8" high x 7 1/4" wide x 4 1/4" deep, 4 lbs.
Power	DC 12V ~ 36V (±10%), 18w
Operating Frequency	Dual Frequency 50/200 kHz
Output Power	600W
Operating Temperature	-15° C ~ +50° C
Screen Capture Snap Shots	10 pages
Event Position Storage	10 event positions stored in memory
Display Mode	Normal (single/dual-frequency), Bottom-lock, A-scope, Bottom Zoom, Nav, GPS Position, Steering
Depth Range	24 ranges from 0-10ft ~ 0-4800ft
Image Speed	Fixed 8 speeds (4/1, 2/1, 1/1, 1/2, 1/4, 1/8, 1/16, 1/32) and stop
Interference rejection	3 levels
Noise rejection	4 levels
Function	Gain (auto/manual), range (auto/manual), depth with shift (auto/manual), pulse length selection, white/black line, water temperature, bottom enhancement, 26 operating languages, multiple screen background colors
Alarms	Depth Alarm, Sea Temperature Alarm, Fish Alarm; NMEA Input - GGA, RMC,VTG; NMEA Output - DBT, DPT, MTW, TLL, VHW

CVS-1410	
Output Frequency	50kHz/200kHz
Output Method	50 kHz/200 kHz
Output Method	Single or alternate
Output Power	1 kW
Output Firing Times	3000 times/minute at maximum
Display	10.4 inch color TFT LCD VGA (640 x480)
Presentation modes	Normal, Dual frequency, Zoom, NAV (Simple plotter, compass), A scope
Range	2.5m to 2000m; 8ft - 6500ft max depth
Range unit	m, fm, lfm, ft
Shift step	1m, 10m, 1/8, 1/4; 3ft, 30ft
Zoom Range	2.5m to 200m; 8ft - 650ft
Image Speed	9 steps & stop
Function registration	Image speed, A scope, Shift Interference rejection, Color rejection, Noise rejection, Zoom range, Zoom start, White line, Background color, etc
Color Tone	Monochrome, 9 color, 16 color, 64 color
Input data format & sentences	NMEA0183 Ver.1.5/2.0/3.0; GGA, GLL, HDT, MTW, MWV, RMC, VHW, VTG, ZDA
Output data format & sentences	NMEA0183 Ver 2.0 (DBT only Ver.1.5); DBT, DPT, GGA, GLL, HDT, MTW, MWV, RMC, TLL, VHW, VTG, ZDA
Power Supply	10.8 to 31.2 V DC
Power Consumption	30 W or less (at 24V DC)
Range of Operating Temperature	-15° C to +55° C
Store Temperature	-30° to +70° C
Water Protection	IPX5
Size of Cabinet	13" x 12.5" x 6.8"
Weight	16.4 lbs.

	T-900 Series	MDS-1	MDS-8	MDS-9
Display	8.4 TFT Color LCD (640 x 480 pixels)	N/A		
Display Modes	Head up, North up***, Course up ***, True motion ***	Head-up, North-up, Course-up		
Range Scales NM	1/8 to 24//36//48	1/8 to 24	1/2 to 24	1/8 to 36
Range Rings NM	1/32-12	1/32 to 6	1/32 to 6	1/32 to 9
Input Format	NMEA -0183	N/A		
Power Requirement	10.2~31.2.6v DC	10.8~31.2V DC	10.8~41.6v DC	10.8~41.6v DC
Power Consumption	45W // 55W //70W	30W or less	30W or less	45W or less
Case Size/Weight	8.7H x 8.7"W x 3.9"D, 7.7 lbs	8.1"Hx12.4"W, 9.9 lbs	9"Hx20"W, 18lbs.	9"Hx23.5"W, 21.5lbs
ANTENNA UNIT				
Scanner	18" Radome // 25" Radome 3.5' or 4.5' Open Array	12.4" Radome	20" Radome	23.5" Radome
Peak Power Output	2kW // 4kW // 4kW	2kW	2kW	4kW
Frequency	9410 +/- 30 MHz// 9445 +/- 30MHz	9410 +/- 30 MHz	9410 +/- 30 MHz	9445 +/- 30MHz
Beam Width Horizontal	6° //3.9° // 2.5° (3.5), 1.8° (4.5)	7°	4.7°	4°
Vertical	25° // 25° // 22°	25°	25°	25°
Ant. Rotation Speed	2kW 24 rpm, 4kW 24 or 48 rpm	24 rpm	24 rpm	24 rpm
NMEA-0183 Output Data Format	TTM, TLL			
NMEA-0183 Input Data Format	BEC, BWC, BWR, DPT, DBT, GGA, GLL, GNS, HDG, HDM, HDT, MTW, MWD, MWV, RMA, RMB, RMC, VHW, VTG, XTE			
Other Functions	Interference rejection, Target expansion., VRM, EBL, Parallel index, Course position (Lat/Lon), Bearing (true/relative), Trail*, VGA Monitor output, Slave display monitor input/output, External buzzer. Accepts NTSC camera input			

ES-502	
Display Colors	16 colors on color chart plotter or 16 gray levels on gray levels chart plotter
Display Vertical Resolution	up to 400 pixels (depending on chart plotter screen resolution)
Zoom	6 selectable ranges from 1, 2, 4, 8, 16 and 32 NM
Power requirements	10-35 Volt dc
Power Consumption - operating	17W max
Power Consumption - stand by	1.7W max
Operating Frequency	Dual 50 and 200 kHz
Output Power	500/1000W (4000/8000Wpp)
Depth Range*	1KW/200kHz : 2.5Ft (0.76m) to 1200Ft (366m) Max Typical = 980Ft (299m); 1KW/50kHz : 5Ft (1.52m) to 4000Ft (1219m) Max Typical = 2700Ft (823m); 500W/200kHz : 2.5Ft (0.76m) to 700Ft (213m) Max Typical = 600 Ft (183m); 500W/50kHz : 5Ft (1.52m) to 1500Ft (457m) Max Typical = 1350 Ft (411m); NOTE* This is not a guaranteed specification. The actual maximum depth capability of the system depends on the type of transducer fitted, the reflectivity of the bottom, water condition, etc.
Operating Temp. Range	0°C to +50°C
Storage Temp. Range	-20°C to +70°C
Weight	1 kg (2.20 lbs)
Water Proof Spec.	IP 54
Case Size	7.62" (193.30mm) x 6.87" (174.30mm) x 2.19" (55.50mm)

Transducers with Transducer ID Technology	
500W, Transom w/speed & temp (Beam Angle: 42° @ 50kHz, 12° @ 200kHz)	492/50/200ST-ES
500W, Plastic in-hull, depth only (Beam Angle: 45° @ 50kHz, 12° @ 200kHz)	494/50/200-ES
500w Plastic 2" Flush mount thru-hull w/Temp. (Beam Angle: 45° @ 50kHz, 12° @ 200kHz)	P319/50/200T-ES
500W, Bronze thru-hull w/speed & temp, FB. included (Beam Angle: 45° @ 50kHz, 12° @ 200kHz)	496/50/200ST-ES
Tilted Element (for 8° or 15° hull deadrise, 600w, 45°@50kHz, 12°@200kHz)	B-60-12-ES
Tilted Element (for 16° or 24° hull deadrise, 600w, 45°@50kHz, 12°@200kHz)	B-60-20-ES
1000W, Bronze thru-hull w/temp, FB. included (Beam Angle: 14°x23° @ 50kHz, 3°x5° @ 200kHz)	189/50/200T-ES

	EC5	EC7	EC11
Power Requirements	10~35V DC, 5.2W	10~35V DC, 9.2W	10~35V DC, 12.5W
Color LCD display (dia.)	5" QVGA	7" HD QVGA	10.4" HD QVGA
Resolution (pixels)	240 x 320	800 x 480	800 x 600
Cartography	Uses C-Map		
Cursor Control	Track Pad with Push for enter		
Memory	Non-volatile		
Waypoints/Marks	5,000	10,000	10,000
Routes (50 waypoints max per rt., reversible)	25, reversible	50, reversible	50, reversible
Track Plots	5,000	10,000	10,000
Video Input	No	1	2
Video Output	No	No	VGA
Type of User Points	16, Alphanumeric		
Plotting Intervals	Distance (0.01, 0.05, 0.1, 0.5, 1, 2, 5.10 NM; Time (1, 5, 10, 30 sec, 1 min)		
Depth Unit for Depth Line	MT, FT or FM		
Operating Temperature	32° to 131° F (0° to 55°C)		
Input/Output Format	NMEA-0183 Ver 2.0		
Antenna	External or Internal	External or Internal	External
Case Size/Weight	5.8" w x 7.6" H x 1.8" D, 1.1 lbs.	9.6" W x 6.1" H x 2.6" D, 2.4 lbs	13.1" W x 8.8" H x 2.1" D 4.4 lbs
Waterproof Rating	IP67		
GPS/WAAS Receiver	Receiver--L1, CA/code; Channels--18; Accuracy--Better than 3m, 16 channel GPS/WAAS receiver parallel 3 meter accuracy.		

Trawl Plot 12SD	
Power Requirements	10~35 VDC, 16W
Color LCD display (dia.)	12.1"
Resolution (pixels)	800 x 600
Cartography	Uses C-Mapp MAX or NT+ C-Cartridges
Cursor Control	Joystick
Memory	Non-volatile
Waypoints/Marks	5000
Routes (50 waypoints max per rt., reversible)	50
Track Plots	50,000 divided into 5 track memories
Video Input	2
Video Output	VGA
Plotting Intervals	Distance (0.01, 0.05, 0.1, 0.5, 1, 2, 5,10 NM; Time (1, 5, 10, 30 sec, 1 min)
Depth Unit for Depth Line	MT, FT or FM
Operating Temperature	32° to 131° F (0° to 55°C)
Input/Output Format	NMEA-0183 Ver 2.0
Case Size/Weight	15"W x 13.5"H x 8.9"D, 18.7 lbs
Waterproof Rating	IP67
GPS/WAAS Receiver	16 channel parallel GPS/WAAS receiver 3 meter accuracy

Explorer Plus	
Power Requirements	10~35 VDC, 3.5W
Resolution (pixels)	Up to 1024 x 768
Cartography	Uses C-Mapp MAX or NT+ C-Cartridges
Cursor Control	Joystick
Memory	Non-volatile
Waypoints/Marks	10,000
Routes (50 waypoints max per rt., reversible)	50
Track Plots	1000
Video Input	No
Video Output	VGA
Plotting Intervals	Distance (0.01, 0.05, 0.1, 0.5, 1, 2, 5,10 NM; Time (1, 5, 10, 30 sec, 1 min)
Depth Unit for Depth Line	MT, FT or FM
Operating Temperature	32° to 131° F (0° to 55°C)
Input/Output Format	NMEA-0183 Ver 2.0
Case Size/Weight	5.5"W x 3.7"H x 3.2"D, 0.9 lbs.
Waterproof Rating	IP67
GPS/WAAS Receiver	16 Channel parallel GPS/WAAS receiver 3 meter accuracy

SST-110	
Power	9.50 to 33.0 (absolute maximum) VDC, 0.045 amps nominal, 0.045 amps nominal current draw; Operation outside this range can cause erratic behavior or damage
Operating Temp.	32°F to 122°F (0° to 50°C)
Size/Weight	4.3" x 4.3" x 3.5" deep (110 x 110 x 89mm); 1 lbs.
Display Data	Water Temp. High and Low Alarms, Temperature Trend arrows, alarm symbol
Resolution	.01° F or C
Accuracy	Front panel adjustable
Ranges	32° F to 99.99° F (0° to 37.77° C)
Transducers	Transom and thru-hull temperature transducers
Display	4 digit LCD, 5 levels of backlighting

Temperature Probes	
Transom Mount Temperature Probe	TM200-30
Bronze thru-hull temperature probe 5/16"	TS200-30

	ColorMax 6	ColorMax Wide
Power Requirements	10~35 VDC, 8W	10~35 VDC, 8W
Color LCD display (dia.)	5.6"	7"
Resolution (pixels)	320 x 240	480 x 234
Cartography	Uses C-Mapp MAX or NT+ C-Cartridges	
Cursor Control	Joystick	Joystick
Memory	Non-volatile	
Waypoints/Marks	500	500
Routes (50 waypoints max per rt., reversible)	25	25
Track Plots	1000	1000
Video Input	No	No
Video Output	No	No
Type of User Points	16, Alphanumeric	
Plotting Intervals	Distance (0.01, 0.05, 0.1, 0.5, 1, 2, 5, 10 NM; Time (1, 5, 10, 30 sec, 1 min)	
Depth Unit for Depth Line	MT, FT or FM	
Operating Temperature	32° to 131° F (0° to 55°C)	
Input/Output Format	NMEA-0183 Ver 2.0	
Antenna	External	External or Internal
Case Size/Weight	8.2"W x 6"H x 2.7"D, 1.75 lbs	9.5"W x 5.9"H x 2.6"D, 2.4 lbs
Waterproof Rating	IP67	
GPS/WAAS Receiver	16 Channel parallel GPS/WAAS receiver 3 meter accuracy	

	ColorMax Pro	ColorMax 15
Power Requirements	10~35 VDC, 12.5W	10~35 VDC, 30W
Color LCD display (dia.)	10.4"	15"
Resolution (pixels)	800 x 600	1024 x 768
Cartography	Uses C-Mapp MAX or NT+ C-Cartridges	
Cursor Control	Joystick	Trackpad
Waypoints/Marks	1000	5000
Routes (50 waypoints max per rt., reversible)	50	50
Track Plots	5000	10,000 divided into 5 Track memories
Video Input	2	2
Video Output	VGA	VGA
Type of User Points	16, Alphanumeric	
Plotting Intervals	Distance (0.01, 0.05, 0.1, 0.5, 1, 2, 5, 10 NM; Time (1, 5, 10, 30 sec, 1 min)	
Depth Unit for Depth Line	MT, FT or FM	
Operating Temperature	32° to 131° F (0° to 55°C)	
Input/Output Format	NMEA-0183 Ver 2.0	
Antenna	External	External
Case Size/Weight	13"W x 8.7"H x 2.1"D, 4.4 lbs	14.9"W x 13.6"H x 3.9"D, 9.9 lbs
Waterproof Rating	IP67	
GPS/WAAS Receiver	16 Channel parallel GPS/WAAS receiver 3 meter accuracy	

SP-70, SP-80	
Operating Voltage	10-40V DC
Power Consumption	Avg. 3 amps
Solenoid Output	20 amps max.
DC Reversing Pump	+/- 20 amps max
Clutch Output	3 amps max
Navigational Interface	NMEA 0183
Heading Reference	Fluxgate
Course Resolution	1°
Course Detection	0.25°
Pumpset	18 cubic inc. 12V DC standard
Case Size/Weight	SP 70: 2.8"W x 1"D x 5.2"H, Approx 1.lb; SP -80: 6"W x 1"D x 3.1"H, Approx. 2 lbs.
Processor Unit	6.3"@ x 15"l x 2.7"H
Fluxgate Compass	5.6"W x 4.2"L x3.4"H

Accessories	
SP-70R, SP-80R	With rotary rudder feedback for inboards and 18 CI pumpset
SP-70L, SP-80:	With linear rudder feedback for outboards and 18 CI pumpset
SP-70MS, SP-80ms	Type "S" Mechanical Dashboard Drive w/ Built-in Rudder Feedback
SRA-1	Rudder Angle Indicator

VECTOR PRO G1--GPS Compass	
Dimensions	16.4"L x 2.7"H x 6.2W
Receiver Type	2 x 12 ch. Parallel GPS/SDGPS
Update Rate	20Hz Maximum Position & Heading (Default Rate = 10Hz)
Rate of Turn Tracking Speed	90' Deg. / Second max.
Heading Accuracy	0.6' Deg. Typical
Pitch / Roll Accuracy	1.4' Deg Typical
Heave Accuracy	<30cm
Position Accuracy	< 4.0 meters GPS, < 1.0 meters DGPS
Serial Ports	2 RS-232 Full Duplex
Data Output types	NMEA-0183 & NMEA-2000
NMEA-0183 Sentences	HDT, HDM, ROT, GGA, GSV, VTG, RMC, ZDA, SHR
Input Voltage	10 to 36 VDC
Current Consumption	250 mA @ 12 VDC

VECTOR PRO G2 --GPS Compass	
Dimensions	24.3"L x 6.1"H x 6.3"W
Power Supply	11 to 36 VDC
Power Consumption	<4.5 Watts
Receiver Type	GPS/WAAS Twin 12 Channel Parallel Receivers, 0.5m separation
Update Rate	20Hz max
Heading Accuracy	<0.5° RMS
Position Accuracy	<2.5 meters RMS Datum WGS-84
Rate of Turn	90° per second maximum
Start up Time	<60 seconds typical
Compass Safe Distance	1.25 meters
Data Ports	RS-232 x 2 full -duplex, RS-422 x 2 half-duplex, all Optically isolated
Data Outputs	NMEA-0183
NMEA-0183	HDT, HDM, ROT, GGA, GSV, VTG, RMC, ZDA, SHR

GPS-90MkII	
Receiver Type	18 Channel Parallel, WAAS/EGNOS - Capable Receiver
Tracking Speed	190 knots maximum
Position Accuracy	<33 ft. (10m) GPS, <10 ft (3m) WAAS/EGNOS, <10 ft (3m) DGPS
Velocity	0.1 knot RMS (WAAS or DGPS)
GPS Receiving Code	C/A Code
Update Rate	1/sec., Continuous
Power Supply	10.8 VDC to 31.2 VDC
Power Consumption	4.5 watts or less
Memory Protection	Built-in lithium Battery
Operating Temperatures	Display: 5 deg. F to 131 deg. F. Antenna: -13 deg. F to 131 deg. F
Display	B&W LCD w/ backlight 128 x 64 pixals
Position Coordinate Displays	Latitude/Longitude, Loran C Position, Loran A, Decca
Navigational Data Displays	Speed, Course, Distance, Bearing, Time to Go to Waypoint, Cross Track Error, Course Deviation, Present Time, Satellite Status, Altitude, Total time & distance in route, distance & Bearing between two waypoints, MOB display
Track Display Range	0.025, 0.05, 0.1, 0.2, 0.5, 1, 2, 5, 10, 20 nm (sm or km)
Track Memory	2,000 points
Track Intervals	10, 20, 30 seconds, 1, 3, 5, minutes 0.1, 0.5, 1 nm (sm or km)
Instant Memory (event)	200 points
Waypoint Memory	200 points
Route Memory	20 Reversible Routes (Max. 400 points)
Alarms	Arrival, Cross track, Off Course, Anchor Watch, GPS position
Position Corrections	Lat/Lon, Loran C
Magnetic Compensation	Automatic or Manual
NMEA Output Data	NMEA-0183

GPS-95CP GPS/WAAS RECEIVER	
Power Requirements	12~36 VDC, 3W
Color LCD display	4.3" (diagonal)
Resolution	480 x 272 pixels
Cartography	Uses C-Map MAX or NT+ C-Card cartridges
Cursor Control	Trackpad
Memory	Non-volatile
Waypoints/Marks	2000
Routes	100 (20 wpts per rt.)
Track Plots	50,000
Type of User Points	16, alphanumeric
Plotting Intervals	Distance - 0.03 to 10 NM; Time- 3 sec to 60 mins
Operating Temperature	5° to 122°F (-15° to 50° C)
Input/Output Format	NMEA-0183
Antenna	External or Internal
Case Size/Weight	6.9"W x 3.9"H x 3.2"D. 1.1 lbs
Receiver	L1, CA/code
Accuracy	Better than 3m, 95% of the time
Max. Solution Update Rate	1 per sec
Cable Length	33 feet

AIS RADAR	
Power Requirements	50mA @ 10~16VDC / 43mA@10~16 VDC
Frequency	161.976 and 162.02 MHz
Zoom	6 selectable ranges from 1, 2, 4, 8, 16 and 32 NM
Case Size/Weight	6"W x 4.5"H x 1.6"D. 1.3 lbs/ 4.7"W x 1.5"H x 3.9"D. .05 lbs
Other Features	Receives NMEA input (RMC) from the vessels GPS to put the user at the center of the screen. All other AIS carrying vessels are displayed with bearing and range relative to the user

GPK-11	
Overall Dimensions (x height):	97 x 32 mm (flush/pole/rail mounting)
Weight:	160 grams (without cable)
Cable:	15 meter 8x28AWG
Input Voltage	10-35Vdc.
Power Consumption	0.8 W max
Electrical Interface	TTL voltage levels, RS-232 polarity
Receiving Method/Frequency	16 channels parallel (up to 3 for WAAS Satellites); 1575.42MHZ (L1, C/A code)
Receiving Sensitivity	Less than -135 dBm
Time to First Fix (TTFF)	Warm start: 33 seconds (typical); Cold Start: 40 seconds (typical)
Accuracy Position	Less than 2.5mCEP1 5.0m SEP2: GPS: (SA=Off, HDOP<4); Less than 2.0mCEP1 3.0SEP2: DGPS: (SA=OFF HDOP<4)
Dynamics Acceleration	Strong Signals <=4g; Weak Signals typical 1g
Altitude/Velocity	1800 m/1850Km/h (515 m/sec)
DGPS Format	WAAS; EGNOS; MSAS
Output Format/NMEA Output Messages	NMEA-0183 Baud rate 4800 N81; GGA, RMC, GSA, GSV, TXT
Geodetic Datum	WGS84
Operating Temperature/Storage Temperature	from 0° to +60°C/from -20° to +85°C
Relative Humidity/Water Resistance	95% non-condensing/IPX7

HDK-11	
Static Compass Accuracy	1° RMS when level
Dynamic Compass Accuracy	2° RMS (Best-in-Class)
Heading Display Resolution	0.1°
Settling Time	1 second (adjustable)
Heading Data Output Update Rate	-10Hz--NMEA0183 - Adjustable up to 20 Hz --NMEA 2000®
Rate-of-Turn Range	0° to 70° per second
Rate-of-Turn Accuracy	1° per second
Rate-of-Turn Data Output Update Rate	2 Hz--NMEA0183 (adjustable up to 10Hz) --Adjustable up to 20 Hz--NMEA 2000®
Pitch and Roll Range/Display Resolution/Boat Alignment/Output Update Rate	± 50°/0.1°/yes with software/2 Hz--NMEA 0183 (adjustable up to 10Hz) --Adjustable up to 20Hz--NMEA 2000®
Static Pitch and Roll Accuracy	<1°
Dynamic Pitch and Roll Accuracy	<3°
Supply Voltage/Current	9VDC to 16VDC /<140mA
NMEA 2000® Load Equivalency Number (LEN)	3
Certifications & Standards	CE, IPX6, RoHS, IEC60945

AIS Black Box MKIII	
Operating frequencies	162.025 and 161.975 MHz
Supply voltage	10 to 16 volts DC
Supply current	43mA M
All class A and B AIS Messages relayed	
Antenna input	50 ohm BNC
Data connector	9 pin 'D' type
Mounting - via two molded mounting tabs	
Dimensions	115 x 100 x 30mm
Output format	NMEA 0183 (38400 Baud)
VDM encapsulation string conforming to ITU-1371	NMEA RMC from GPS
Supplied with Software, fused power cable and data cable (Various receiver parameters are factory preset but can be altered from the PC if software is available.)	

SP-36	
Color Head	Sunlight viewable high resolution QVGA (320x240) TFT display with cold-cathode fluorescent backlight (400 Cd/m2 typ.) Sunlight viewable high resolution QVGA (320x240) TFT display with cold-cathode fluorescent backlight (400 Cd/m2 typ.)
Operating Voltage	11 to 30 VDC
Power Consumption	SPU: 200 mADC (all outputs off); Control Head Color: 350 mADC (max)
Drive Output	Average 0.5 Amps, 3 Amps Peak; (Lower consumption capability with low backlight setting)
Navigational Interface	NAV1 input NMEA 0183 compliant, optically isolated, 4800 Baud; NAV2 input NMEA 0183 compliant, optically isolated, auto-baud detecting; 4800 & 9600 Baud NMEA 0183 output Heading (10x per second) & Autopilot status (1x per second); NMEA 0183 compliant, RS-422 compliant, RS-485 compliant; 4800 Baud, 8 data bits, no parity, one stop bit
Course Detection	0.1°
Course Resolution	AUTO mode 1°, NAV mode 0.1°
External Rudder Angle Indicator	Optional with RFU installed. Supports up to five 500 A instruments
Jog Steering Control Input	Yes
Rudder Follower Input	1.0 - 4.0 VDC centered at 2.5 VDC.
Control Head Cable Length	76 metres (25') standard; Custom lengths up to 15 metres (50') available
Vessel Type	Stern & Outboard Drives
Vessel Size	22-50' vessel
Dimensions	Control Head (surface mount w/o knob): 155 x 113 x 29 mm/ 6.1" x 4.5" x 1.2" ; Cable 25' Head to SPU
	Signal Processing Unit: 257 x 184 x 73 mm/ 10.2" x 7.3" x 2.9"
Operating Voltage	11 to 30 VDC
Power Consumption	Average 0.5 Amps, 3 Amps Peak (Lower consumption capability with low backlight setting)
Drive Output	20 amps DC reversing pump or DC solenoids
Navigational Interface	Dual NMEA0183 inputes
NMEA 0183 Output	Heading (10Hz) Autopilot Status (1Hz)
Heading Reference	Fluxgate Compass with Heading Rate Stabilizer or SSRC Rate Gyro Compass
Course Resolution	1°
Course Detection	0.1°
Control Head	Sunlight viewable high contract LCD is available in color or monochrome version QVGA (320 x 240) high resolution display

NAV-FAX 200	
Frequency Range	20 kHz - 30MHz
Frequency Tolerance	± 100 Hz
Synthesize	1 kHz STEPS
Clarity	± 800 Hz
Bandwidth	SSB=3.8kHz, AM=6 kHz
Sensitivity	1 microvolt
Audio Output	2 watts
Input Impedance	70 ohms
Tuning Control	4 rates as follows: 10 kHz/REV, 100 kHz/REV, 1MHz/REV, 10 MHz/REV
Power Supply	12 V DC, Power cable included
Antenna	Long-wire type included
Modes	USB/AM/LSB
First IF	45 MHz with Crystal Filter
2nd IF	455 kHz with Ceramic Filters
Demodulator	AM - Quasi Synchronous; SSB--Product Detector
Option	120 V AC/12 V DC power unit for home use